



[Go to Product page](#)

Datasheet for ABIN7101713
anti-MTA2 antibody

5 Images

Overview

Quantity:	20 µL
Target:	MTA2
Reactivity:	Human
Host:	Rabbit
Clonality:	Monoclonal
Conjugate:	This MTA2 antibody is un-conjugated
Application:	Western Blotting (WB), Immunohistochemistry (IHC), Immunofluorescence (IF), Chromatin Immunoprecipitation (ChIP)

Product Details

Immunogen:	A synthesized peptide derived from human MTA2
Isotype:	IgG
Cross-Reactivity:	Human
Characteristics:	Monoclonal Antibodies
Purification:	Affinity purification

Target Details

Target:	MTA2
Alternative Name:	MTA2 (MTA2 Products)
Background:	This gene encodes a protein that has been identified as a component of NuRD, a nucleosome

Target Details

remodeling deacetylase complex identified in the nucleus of human cells. It shows a very broad expression pattern and is strongly expressed in many tissues. It may represent one member of a small gene family that encode different but related proteins involved either directly or indirectly in transcriptional regulation. Their indirect effects on transcriptional regulation may include chromatin remodeling. It is closely related to another member of this family, a protein that has been correlated with the metastatic potential of certain carcinomas. These two proteins are so closely related that they share the same types of domains. These domains include two DNA binding domains, a dimerization domain, and a domain commonly found in proteins that methylate DNA. One of the proteins known to be a target protein for this gene product is p53. Deacetylation of p53 is correlated with a loss of growth inhibition in transformed cells supporting a connection between these gene family members and metastasis. [provided by RefSeq, May 2011],MTA1L1, PID,Chromatin Remodeling,Epigenetics & Nuclear Signaling,MTA2

Molecular Weight: 75 kDa

Gene ID: 9219

UniProt: [O94776](#)

Pathways: [Chromatin Binding](#)

Application Details

Application Notes: WB,1:500 - 1:2000,IHC,1:50 - 1:200,IF,1:50 - 1:200,ChIP,1:20 - 1:200

Restrictions: For Research Use only

Handling

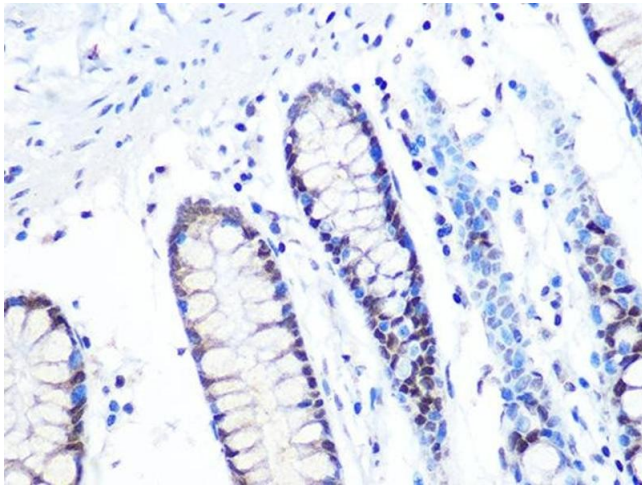
Buffer: PBS with 0.02 % sodium azide,0.05 % BSA,50 % glycerol, pH 7.3.

Preservative: Sodium azide

Precaution of Use: This product contains Sodium azide: a POISONOUS AND HAZARDOUS SUBSTANCE which should be handled by trained staff only.

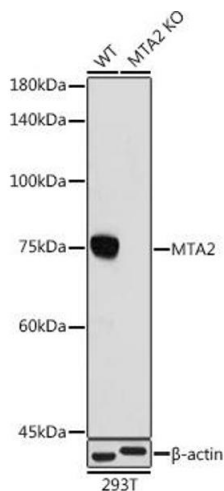
Storage: -20 °C

Storage Comment: Store at -20°C. Avoid freeze / thaw cycles.



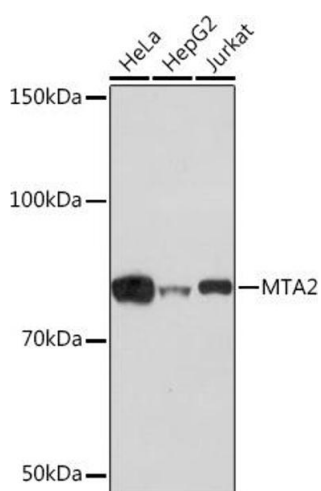
Immunohistochemistry

Image 1. Immunohistochemistry of paraffin-embedded human colon using MT Rabbit mAb (ABIN1679683, ABIN7101713, ABIN7101714 and ABIN7101715) at dilution of 1:100 (40x lens). Perform microwave antigen retrieval with 10 mM PBS buffer pH 7.2 before commencing with IHC staining protocol.



Western Blotting

Image 2. Western blot analysis of extracts from wild type (WT) and MT knockout (KO) 293T cells, using MT antibody (ABIN1679683, ABIN7101713, ABIN7101714 and ABIN7101715) at 1:1000 dilution. Secondary antibody: HRP Goat Anti-Rabbit IgG (H+L) (ABIN1684268 and ABIN3020597) at 1:10000 dilution. Lysates/proteins: 25 µg per lane. Blocking buffer: 3% nonfat dry milk in TBST. Detection: ECL Basic Kit (RM00020). Exposure time: 180s.



Western Blotting

Image 3. Western blot analysis of extracts of various cell lines, using MT Rabbit mAb (ABIN1679683, ABIN7101713, ABIN7101714 and ABIN7101715) at 1:1000 dilution. Secondary antibody: HRP Goat Anti-Rabbit IgG (H+L) (ABIN1684268 and ABIN3020597) at 1:10000 dilution. Lysates/proteins: 25 µg per lane. Blocking buffer: 3% nonfat dry milk in TBST. Detection: ECL Basic Kit (RM00020). Exposure time: 3 min.

Please check the [product details page](#) for more images. Overall 5 images are available for ABIN7101713.