



[Go to Product page](#)

Datasheet for ABIN7101716
anti-MAD2L2 antibody

6 Images

Overview

Quantity:	20 µL
Target:	MAD2L2
Reactivity:	Human
Host:	Rabbit
Clonality:	Monoclonal
Conjugate:	This MAD2L2 antibody is un-conjugated
Application:	Western Blotting (WB), Immunofluorescence (IF), Immunohistochemistry (IHC)

Product Details

Immunogen:	A synthesized peptide derived from human MAD2B/MAD2B/MAD2L2
Isotype:	IgG
Cross-Reactivity:	Human, Mouse, Rat
Characteristics:	Monoclonal Antibodies
Purification:	Affinity purification

Target Details

Target:	MAD2L2
Alternative Name:	MAD2L2 (MAD2L2 Products)
Background:	The protein encoded by this gene is a component of the mitotic spindle assembly checkpoint that prevents the onset of anaphase until all chromosomes are properly aligned at the

Target Details

metaphase plate. The encoded protein, which is similar to MAD2L1, is capable of interacting with ADAM9, ADAM15, REV1, and REV3 proteins. [provided by RefSeq, Jul 2008],FANCV, MAD2B, POLZ2, REV7,Cancer,Cell Biology & Developmental Biology,Cell Cycle,Cell Cycle_Centromere,MAD2L2

Molecular Weight: 24 kDa

Gene ID: 10459

UniProt: [Q9UI95](#)

Application Details

Application Notes: WB,1:500 - 1:2000,IHC,1:50 - 1:200,IF,1:50 - 1:200

Restrictions: For Research Use only

Handling

Buffer: PBS with 0.02 % sodium azide,0.05 % BSA,50 % glycerol, pH 7.3.

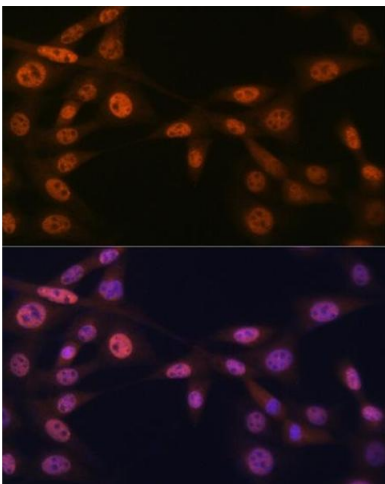
Preservative: Sodium azide

Precaution of Use: This product contains Sodium azide: a POISONOUS AND HAZARDOUS SUBSTANCE which should be handled by trained staff only.

Storage: -20 °C

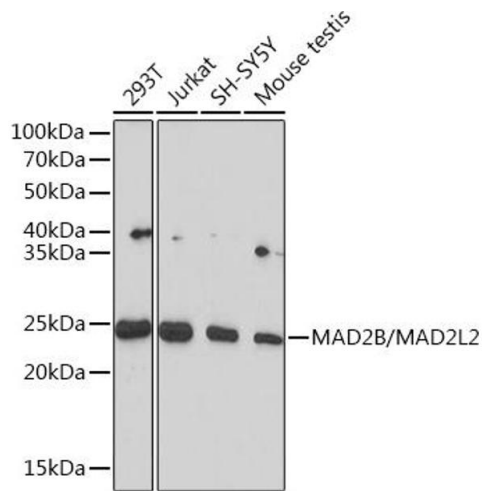
Storage Comment: Store at -20°C. Avoid freeze / thaw cycles.

Images



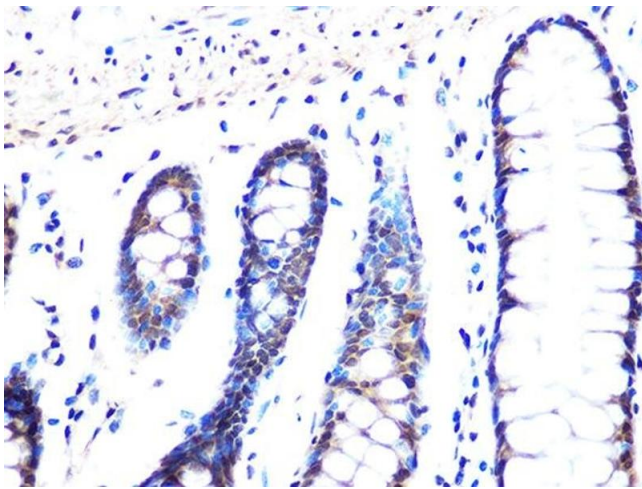
Immunofluorescence

Image 1. Immunofluorescence analysis of NIH-3T3 cells using MB/MB/ML2 Rabbit mAb (ABIN1679325, ABIN3019109, ABIN3019110 and ABIN7101716) at dilution of 1:100 (40x lens). Blue: DAPI for nuclear staining.



Western Blotting

Image 2. Western blot analysis of extracts of various cell lines, using MB/MB/ML2 Rabbit mAb (ABIN1679325, ABIN3019109, ABIN3019110 and ABIN7101716) at 1:1000 dilution. Secondary antibody: HRP Goat Anti-Rabbit IgG (H+L) (ABIN1684268 and ABIN3020597) at 1:10000 dilution. Lysates/proteins: 25 µg per lane. Blocking buffer: 3 % nonfat dry milk in TBST. Detection: ECL Basic Kit (RM00020). Exposure time: 90s.



Immunohistochemistry

Image 3. Immunohistochemistry of paraffin-embedded human colon using MB/MB/ML2 Rabbit mAb (ABIN1679325, ABIN3019109, ABIN3019110 and ABIN7101716) at dilution of 1:100 (40x lens). Perform microwave antigen retrieval with 10 mM PBS buffer pH 7.2 before commencing with IHC staining protocol.

Please check the [product details page](#) for more images. Overall 6 images are available for ABIN7101716.