



[Go to Product page](#)

Datasheet for ABIN7101717

anti-KRT6A antibody

2 Images

Overview

Quantity:	20 µL
Target:	KRT6A
Reactivity:	Human
Host:	Rabbit
Clonality:	Monoclonal
Conjugate:	This KRT6A antibody is un-conjugated
Application:	Western Blotting (WB), Immunohistochemistry (IHC)

Product Details

Immunogen:	A synthesized peptide derived from human Cytokeratin 6 (KRT6) (KRT6)
Isotype:	IgG
Cross-Reactivity:	Human, Mouse, Rat
Characteristics:	Monoclonal Antibodies
Purification:	Affinity purification

Target Details

Target:	KRT6A
Alternative Name:	KRT6A (KRT6A Products)
Background:	The protein encoded by this gene is a member of the keratin gene family. The type II cytokeratins consist of basic or neutral proteins which are arranged in pairs of heterotypic

Target Details

keratin chains coexpressed during differentiation of simple and stratified epithelial tissues. As many as six of this type II cytokeratin (KRT6) have been identified, the multiplicity of the genes is attributed to successive gene duplication events. The genes are expressed with family members KRT16 and/or KRT17 in the filiform papillae of the tongue, the stratified epithelial lining of oral mucosa and esophagus, the outer root sheath of hair follicles, and the glandular epithelia. This KRT6 gene in particular encodes the most abundant isoform. Mutations in these genes have been associated with pachyonychia congenita. In addition, peptides from the C-terminal region of the protein have antimicrobial activity against bacterial pathogens. The type II cytokeratins are clustered in a region of chromosome 12q12-q13. [provided by RefSeq, Oct 2014],CK-6C, CK-6E, CK6A, CK6C, CK6D, K6A, K6C, K6D, KRT6C, KRT6D, PC3,Cell Biology & Developmental Biology,Cytoskeleton,Cytoskeleton_Intermediate Filaments,Extracellular Matrix,Extracellular Matrix_Cytokeratin,Extracellular Matrix_Keratin,Signal Transduction,KRT6A

Molecular Weight: 60 kDa

Gene ID: 3853

UniProt: [P02538](#)

Application Details

Application Notes: WB,1:1000 - 1:3000,IHC,1:50 - 1:200

Restrictions: For Research Use only

Handling

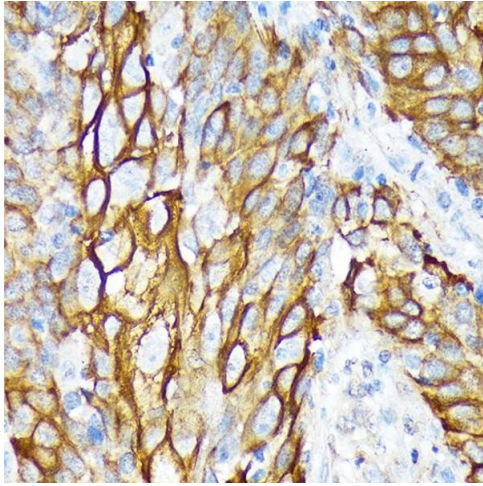
Buffer: PBS with 0.02 % sodium azide,0.05 % BSA,50 % glycerol, pH 7.3.

Preservative: Sodium azide

Precaution of Use: This product contains Sodium azide: a POISONOUS AND HAZARDOUS SUBSTANCE which should be handled by trained staff only.

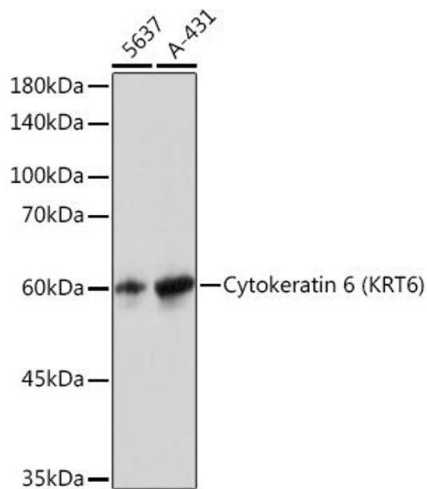
Storage: -20 °C

Storage Comment: Store at -20°C. Avoid freeze / thaw cycles.



Immunohistochemistry

Image 1. Immunohistochemistry of paraffin-embedded human esophageal cancer using Cytokeratin 6 (KRT6) Rabbit mAb (ABIN1680165, ABIN3019111, ABIN3019112 and ABIN7101717) at dilution of 1:100 (40x lens). Perform microwave antigen retrieval with 10 mM Tris/EDTA buffer pH 9.0 before commencing with IHC staining protocol.



Western Blotting

Image 2. Western blot analysis of extracts of various cell lines, using Cytokeratin 6 (KRT6) Rabbit mAb (ABIN1680165, ABIN3019111, ABIN3019112 and ABIN7101717) at 1:3000 dilution. Secondary antibody: HRP Goat Anti-Rabbit IgG (H+L) (ABIN1684268 and ABIN3020597) at 1:10000 dilution. Lysates/proteins: 25 µg per lane. Blocking buffer: 3% nonfat dry milk in TBST. Detection: ECL Basic Kit (RM00020). Exposure time: 1s.