



[Go to Product page](#)

Datasheet for ABIN7101721  
**anti-Keratin 10 antibody**

4 Images

### Overview

Quantity:	20 µL
Target:	Keratin 10 (KRT10)
Reactivity:	Human
Host:	Rabbit
Clonality:	Monoclonal
Conjugate:	This Keratin 10 antibody is un-conjugated
Application:	Western Blotting (WB), Immunofluorescence (IF)

### Product Details

Immunogen:	A synthesized peptide derived from human Cytokeratin 10
Isotype:	IgG
Cross-Reactivity:	Human, Mouse, Rat
Characteristics:	Monoclonal Antibodies
Purification:	Affinity purification

### Target Details

Target:	Keratin 10 (KRT10)
Alternative Name:	KRT10 ( <a href="#">KRT10 Products</a> )
Background:	This gene encodes a member of the type I (acidic) cytokeratin family, which belongs to the superfamily of intermediate filament (IF) proteins. Keratins are heteropolymeric structural

## Target Details

---

proteins which form the intermediate filament. These filaments, along with actin microfilaments and microtubules, compose the cytoskeleton of epithelial cells. Mutations in this gene are associated with epidermolytic hyperkeratosis. This gene is located within a cluster of keratin family members on chromosome 17q21. [provided by RefSeq, Jul 2008],BCIE, BIE, CK10, EHK, K10, KPP,Cell Biology & Developmental Biology,Cytoskeleton,Cytoskeleton\_Intermediate Filaments,Extracellular Matrix,Extracellular Matrix\_Cytokeratin,Extracellular Matrix\_Keratin,Signal Transduction,KRT10

---

Molecular Weight: 60 kDa

---

Gene ID: 3858

---

UniProt: [P13645](#)

## Application Details

---

---

Application Notes: WB,1:500 - 1:2000,IF,1:50 - 1:200

---

Restrictions: For Research Use only

## Handling

---

---

Buffer: PBS with 0.02 % sodium azide,0.05 % BSA,50 % glycerol, pH 7.3.

---

Preservative: Sodium azide

---

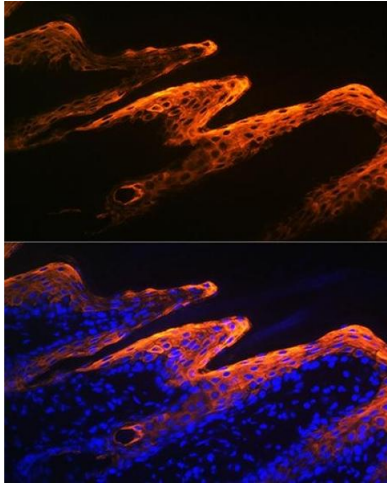
Precaution of Use: This product contains Sodium azide: a POISONOUS AND HAZARDOUS SUBSTANCE which should be handled by trained staff only.

---

Storage: -20 °C

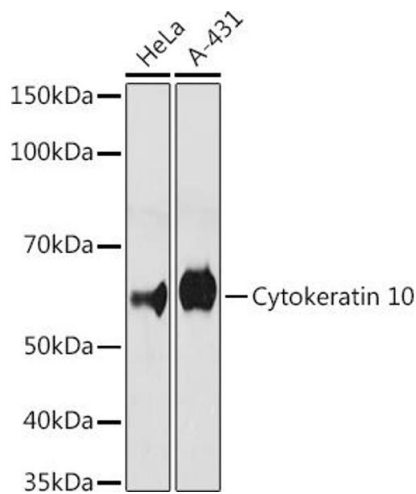
---

Storage Comment: Store at -20°C. Avoid freeze / thaw cycles.



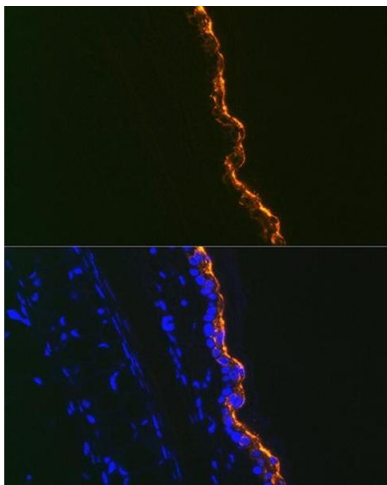
### Immunofluorescence

**Image 1.** Immunofluorescence analysis of human skin using Cytokeratin 10 Rabbit mAb (ABIN1679404, ABIN3019133, ABIN3019134 and ABIN7101721) at dilution of 1:100 (40x lens). Blue: DAPI for nuclear staining.



### Western Blotting

**Image 2.** Western blot analysis of extracts of various cell lines, using Cytokeratin 10 antibody (ABIN1679404, ABIN3019133, ABIN3019134 and ABIN7101721) at 1:500 dilution. Secondary antibody: HRP Goat Anti-Rabbit IgG (H+L) (ABIN1684268 and ABIN3020597) at 1:10000 dilution. Lysates/proteins: 25 µg per lane. Blocking buffer: 3 % nonfat dry milk in TBST. Detection: ECL Basic Kit (RM00020). Exposure time: 180s.



### Immunofluorescence

**Image 3.** Immunofluorescence analysis of Mouse tail and ear using Cytokeratin 10 Rabbit mAb (ABIN1679404, ABIN3019133, ABIN3019134 and ABIN7101721) at dilution of 1:100 (40x lens). Blue: DAPI for nuclear staining.

Please check the [product details page](#) for more images. Overall 4 images are available for ABIN7101721.