



[Go to Product page](#)

Datasheet for ABIN7101722

## anti-CDH6 antibody

### 3 Images

#### Overview

Quantity:	20 µL
Target:	CDH6
Reactivity:	Human
Host:	Rabbit
Clonality:	Monoclonal
Conjugate:	This CDH6 antibody is un-conjugated
Application:	Western Blotting (WB), Immunoprecipitation (IP)

#### Product Details

Immunogen:	A synthesized peptide derived from human K-Cadherin (CDH6)
Isotype:	IgG
Cross-Reactivity:	Human, Mouse, Rat
Characteristics:	Monoclonal Antibodies
Purification:	Affinity purification

#### Target Details

Target:	CDH6
Alternative Name:	CDH6 ( <a href="#">CDH6 Products</a> )
Background:	This gene encodes a member of the cadherin superfamily. Cadherins are membrane glycoproteins that mediate homophilic cell-cell adhesion and play critical roles in cell

## Target Details

---

differentiation and morphogenesis. The encoded protein is a type II cadherin and may play a role in kidney development as well as endometrium and placenta formation. Decreased expression of this gene may be associated with tumor growth and metastasis. [provided by RefSeq, May 2011],CAD6, KCAD,Cancer,Cell Adhesion,Cell Adhesion\_Cadherins,Cell Biology & Developmental Biology,Cytoskeleton,Invasion and Metastasis,Signal Transduction,CDH6

---

Molecular Weight: 130 kDa

---

Gene ID: 1004

---

UniProt: [P55285](#)

---

Pathways: [Cell-Cell Junction Organization](#)

## Application Details

---

---

Application Notes: WB,1:500 - 1:2000,IP,1:50 - 1:200

---

Restrictions: For Research Use only

## Handling

---

---

Buffer: PBS with 0.02 % sodium azide,0.05 % BSA,50 % glycerol, pH 7.3.

---

Preservative: Sodium azide

---

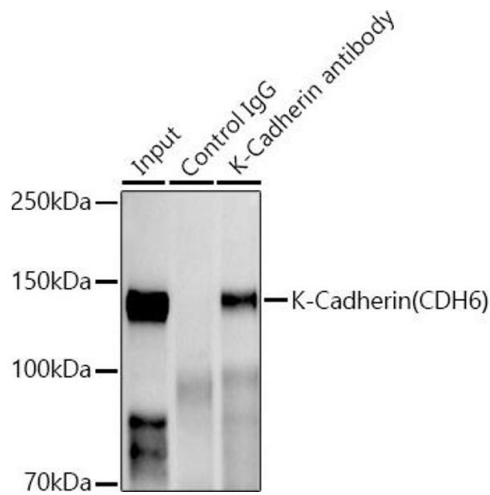
Precaution of Use: This product contains Sodium azide: a POISONOUS AND HAZARDOUS SUBSTANCE which should be handled by trained staff only.

---

Storage: -20 °C

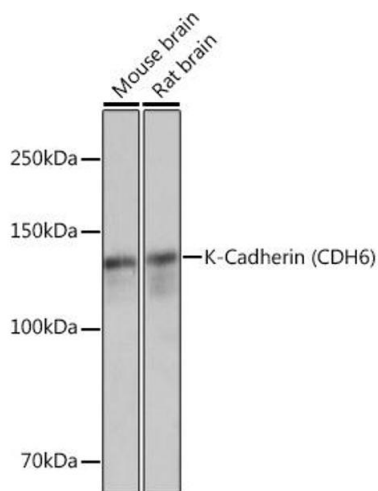
---

Storage Comment: Store at -20°C. Avoid freeze / thaw cycles.



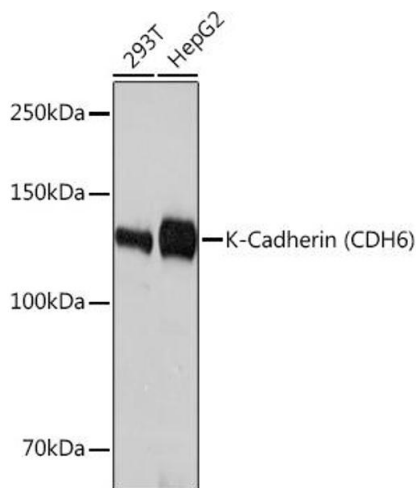
### Immunoprecipitation

**Image 1.** Immunoprecipitation analysis of 300 µg extracts of HepG2 cells using 3 µg K-Cadherin (CDH6) antibody (ABIN1680831, ABIN3019147, ABIN3019148 and ABIN7101722). Western blot was performed from the immunoprecipitate using K-Cadherin (CDH6) antibody (ABIN1680831, ABIN3019147, ABIN3019148 and ABIN7101722) at a dilution of 1:1000.



### Western Blotting

**Image 2.** Western blot analysis of extracts of various cell lines, using K-Cadherin (CDH6) Rabbit mAb (ABIN1680831, ABIN3019147, ABIN3019148 and ABIN7101722) at 1:3000 dilution. Secondary antibody: HRP Goat Anti-Rabbit IgG (H+L) (ABIN1684268 and ABIN3020597) at 1:10000 dilution. Lysates/proteins: 25 µg per lane. Blocking buffer: 3 % nonfat dry milk in TBST. Detection: ECL Basic Kit (RM00020). Exposure time: 1s.



### Western Blotting

**Image 3.** Western blot analysis of extracts of various cell lines, using K-Cadherin (CDH6) Rabbit mAb (ABIN1680831, ABIN3019147, ABIN3019148 and ABIN7101722) at 1:3000 dilution. Secondary antibody: HRP Goat Anti-Rabbit IgG (H+L) (ABIN1684268 and ABIN3020597) at 1:10000 dilution. Lysates/proteins: 25 µg per lane. Blocking buffer: 3 % nonfat dry milk in TBST. Detection: ECL Basic Kit (RM00020). Exposure time: 10s.