



[Go to Product page](#)

Datasheet for ABIN7101734

anti-IRF2 antibody

2 Images

Overview

Quantity:	20 µL
Target:	IRF2
Reactivity:	Human
Host:	Rabbit
Clonality:	Monoclonal
Conjugate:	This IRF2 antibody is un-conjugated
Application:	Western Blotting (WB), Immunoprecipitation (IP)

Product Details

Immunogen:	A synthesized peptide derived from human IRF2
Isotype:	IgG
Cross-Reactivity:	Human
Characteristics:	Monoclonal Antibodies
Purification:	Affinity purification

Target Details

Target:	IRF2
Alternative Name:	IRF2 (IRF2 Products)
Background:	IRF2 encodes interferon regulatory factor 2, a member of the interferon regulatory transcription factor (IRF) family. IRF2 competitively inhibits the IRF1-mediated transcriptional activation of

Target Details

interferons alpha and beta, and presumably other genes that employ IRF1 for transcription activation. However, IRF2 also functions as a transcriptional activator of histone H4. [provided by RefSeq, Jul 2008],IRF-2,Cell Intrinsic Innate Immunity Signaling Pathway,Cytokines,Cytokines_Interferons,Epigenetics & Nuclear Signaling,Immunology & Inflammation,Transcription Factors,IRF2

Molecular Weight: 50 kDa

Gene ID: 3660

UniProt: [P14316](#)

Application Details

Application Notes: WB,1:500 - 1:2000,IP,1:50 - 1:200

Restrictions: For Research Use only

Handling

Buffer: PBS with 0.02 % sodium azide,0.05 % BSA,50 % glycerol, pH 7.3.

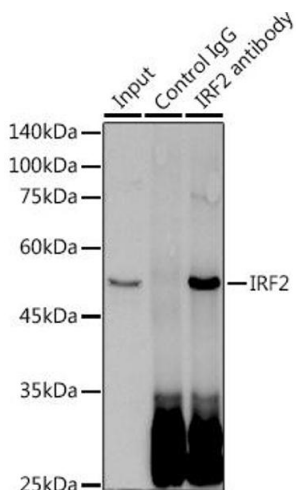
Preservative: Sodium azide

Precaution of Use: This product contains Sodium azide: a POISONOUS AND HAZARDOUS SUBSTANCE which should be handled by trained staff only.

Storage: -20 °C

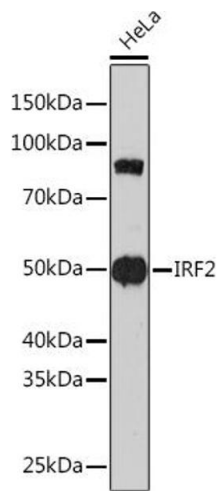
Storage Comment: Store at -20°C. Avoid freeze / thaw cycles.

Images



Immunoprecipitation

Image 1. Immunoprecipitation analysis of 300 µg extracts of HeLa cells using 3 µg IRF2 antibody (ABIN1681257, ABIN3019232, ABIN3019233 and ABIN7101734). Western blot was performed from the immunoprecipitate using IRF2 (ABIN1681257, ABIN3019232, ABIN3019233 and ABIN7101734) at a dilution of 1:500.



Western Blotting

Image 2. Western blot analysis of extracts of HeLa cells, using IRF2 Rabbit mAb (ABIN1681257, ABIN3019232, ABIN3019233 and ABIN7101734) at 1:1000 dilution. Secondary antibody: HRP Goat Anti-Rabbit IgG (H+L) (ABIN1684268 and ABIN3020597) at 1:10000 dilution. Lysates/proteins: 25 µg per lane. Blocking buffer: 3 % nonfat dry milk in TBST. Detection: ECL Enhanced Kit (RM00021). Exposure time: 3 min.