



[Go to Product page](#)

Datasheet for ABIN7101739
anti-Calmodulin 1 antibody

2 Images

Overview

Quantity:	20 µL
Target:	Calmodulin 1 (Calm1)
Reactivity:	Human
Host:	Rabbit
Clonality:	Monoclonal
Conjugate:	This Calmodulin 1 antibody is un-conjugated
Application:	Western Blotting (WB), Immunofluorescence (IF)

Product Details

Immunogen:	A synthesized peptide derived from human Calmodulin
Isotype:	IgG
Cross-Reactivity:	Human, Mouse, Rat
Characteristics:	Monoclonal Antibodies
Purification:	Affinity purification

Target Details

Target:	Calmodulin 1 (Calm1)
Alternative Name:	CALM1 (Calm1 Products)
Background:	This gene encodes a member of the EF-hand calcium-binding protein family. It is one of three genes which encode an identical calcium binding protein which is one of the four subunits of

Target Details

phosphorylase kinase. Two pseudogenes have been identified on chromosome 7 and X. Multiple transcript variants encoding different isoforms have been found for this gene.[provided by RefSeq, Oct 2009],CALML2, CAMI, CPVT4, DD132, LQT14, PHKD, caM,B Cell Receptor Signaling Pathway,Carbohydrate metabolism,Cell Biology & Developmental Biology,Cell Cycle,Cell Cycle_Centrosome,Cytoskeleton,Cytoskeleton_Actins,Endocrine & Metabolism,ErbB-HER Signaling Pathway,G protein signaling,Immunology & Inflammation,Kinase,Neurodegenerative Diseases,Neuroscience,Signal Transduction,T Cell Receptor Signaling Pathway,CALM1

Molecular Weight: 16 kDa

Gene ID: 801

UniProt: [P0DP23](#)

Pathways: [cAMP Metabolic Process](#), [Myometrial Relaxation and Contraction](#), [G-protein mediated Events](#), [Interaction of EGFR with phospholipase C-gamma](#), [Phototransduction](#), [BCR Signaling](#)

Application Details

Application Notes: WB,1:500 - 1:2000,IF,1:50 - 1:200

Restrictions: For Research Use only

Handling

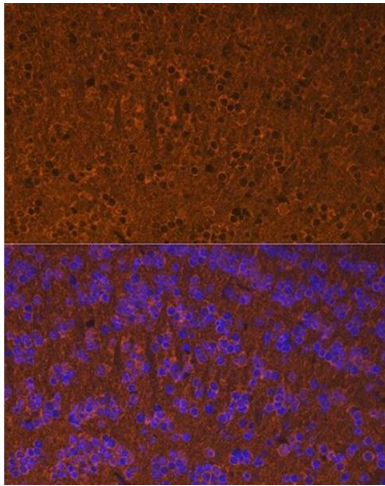
Buffer: PBS with 0.02 % sodium azide,0.05 % BSA,50 % glycerol, pH 7.3.

Preservative: Sodium azide

Precaution of Use: This product contains Sodium azide: a POISONOUS AND HAZARDOUS SUBSTANCE which should be handled by trained staff only.

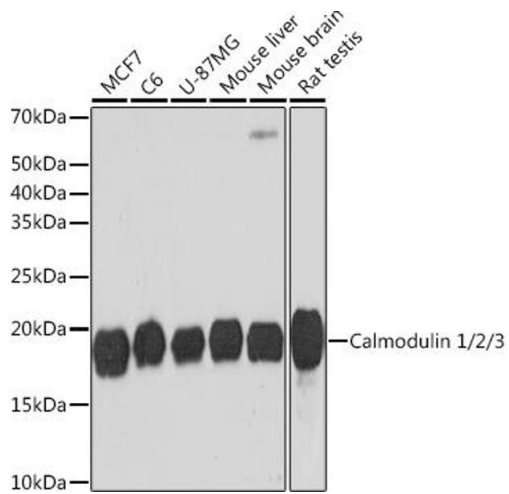
Storage: -20 °C

Storage Comment: Store at -20°C. Avoid freeze / thaw cycles.



Immunofluorescence

Image 1. Immunofluorescence analysis of mouse brain using Calmodulin 1/2/3 Rabbit mAb (ABIN1680490, ABIN3019260, ABIN3019261 and ABIN7101739) at dilution of 1:100 (40x lens). Blue: DAPI for nuclear staining.



Western Blotting

Image 2. Western blot analysis of extracts of various cell lines, using Calmodulin 1/2/3 Rabbit mAb (ABIN1680490, ABIN3019260, ABIN3019261 and ABIN7101739) at 1:1000 dilution. Secondary antibody: HRP Goat Anti-Rabbit IgG (H+L) (ABIN1684268 and ABIN3020597) at 1:10000 dilution. Lysates/proteins: 25 µg per lane. Blocking buffer: 3 % nonfat dry milk in TBST. Detection: ECL Basic Kit (RM00020). Exposure time: 3 min.