



[Go to Product page](#)

Datasheet for ABIN7101749

anti-PAWR antibody

3 Images

Overview

Quantity:	20 µL
Target:	PAWR
Reactivity:	Human
Host:	Rabbit
Clonality:	Monoclonal
Conjugate:	This PAWR antibody is un-conjugated
Application:	Western Blotting (WB), Immunohistochemistry (IHC), Immunofluorescence (IF)

Product Details

Immunogen:	A synthesized peptide derived from human PAR4
Isotype:	IgG
Cross-Reactivity:	Human, Mouse
Characteristics:	Monoclonal Antibodies
Purification:	Affinity purification

Target Details

Target:	PAWR
Alternative Name:	PAWR (PAWR Products)
Background:	The tumor suppressor WT1 represses and activates transcription. The protein encoded by this gene is a WT1-interacting protein that itself functions as a transcriptional repressor. It contains

Target Details

a putative leucine zipper domain which interacts with the zinc finger DNA binding domain of WT1. This protein is specifically upregulated during apoptosis of prostate cells. [provided by RefSeq, Jul 2008],PAR4, Par-4,Apoptosis,Cell Biology & Developmental Biology,Cell Cycle,Endocrine & Metabolism,Epigenetics & Nuclear Signaling,PAWR

Molecular Weight: 40 kDa

Gene ID: 5074

UniProt: [Q96IZ0](#)

Application Details

Application Notes: WB,1:500 - 1:2000,IHC,1:50 - 1:200,IF,1:50 - 1:200

Restrictions: For Research Use only

Handling

Buffer: PBS with 0.02 % sodium azide,0.05 % BSA,50 % glycerol, pH 7.3.

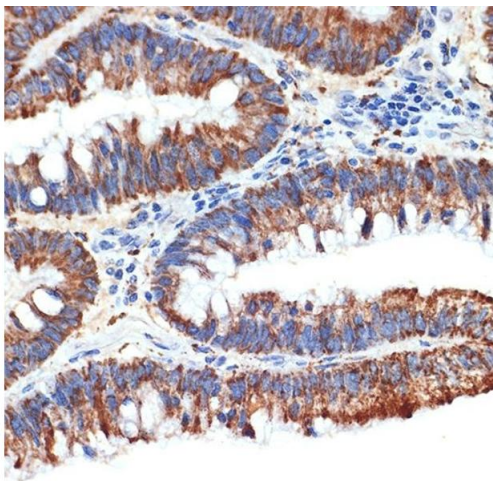
Preservative: Sodium azide

Precaution of Use: This product contains Sodium azide: a POISONOUS AND HAZARDOUS SUBSTANCE which should be handled by trained staff only.

Storage: -20 °C

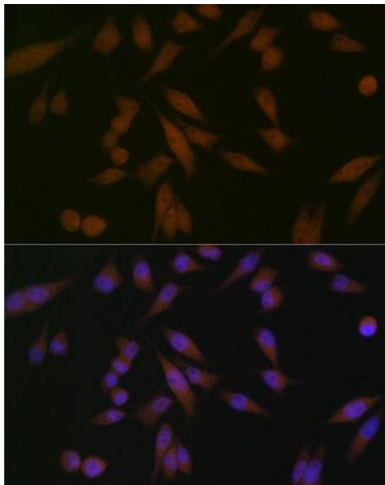
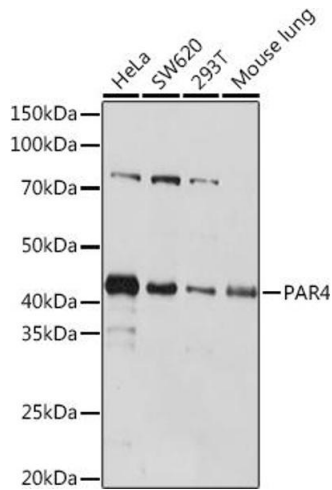
Storage Comment: Store at -20°C. Avoid freeze / thaw cycles.

Images



Immunohistochemistry

Image 1. Immunohistochemistry of paraffin-embedded human colon carcinoma using P Rabbit mAb (ABIN1682842, ABIN3019312, ABIN3019313 and ABIN7101749) at dilution of 1:100 (40x lens). Perform microwave antigen retrieval with 10 mM Tris/EDTA buffer pH 9.0 before commencing with IHC staining protocol.



Western Blotting

Image 2. Western blot analysis of extracts of various cell lines, using P Rabbit mAb (ABIN1682842, ABIN3019312, ABIN3019313 and ABIN7101749) at 1:1000 dilution. Secondary antibody: HRP Goat Anti-Rabbit IgG (H+L) (ABIN1684268 and ABIN3020597) at 1:10000 dilution. Lysates/proteins: 25 µg per lane. Blocking buffer: 3 % nonfat dry milk in TBST. Detection: ECL Basic Kit (RM00020). Exposure time: 10s.

Immunofluorescence

Image 3. Immunofluorescence analysis of HeLa cells using P Rabbit mAb (ABIN1682842, ABIN3019312, ABIN3019313 and ABIN7101749) at dilution of 1:100 (40x lens). Blue: DAPI for nuclear staining.