



[Go to Product page](#)

Datasheet for ABIN7101750
anti-Lamin B2 antibody

5 Images

Overview

Quantity:	20 µL
Target:	Lamin B2 (LMNB2)
Reactivity:	Human
Host:	Rabbit
Clonality:	Monoclonal
Conjugate:	This Lamin B2 antibody is un-conjugated
Application:	Western Blotting (WB), Immunohistochemistry (IHC), Immunofluorescence (IF)

Product Details

Immunogen:	A synthesized peptide derived from human Lamin B2
Isotype:	IgG
Cross-Reactivity:	Human, Mouse, Rat
Characteristics:	Monoclonal Antibodies
Purification:	Affinity purification

Target Details

Target:	Lamin B2 (LMNB2)
Alternative Name:	LMNB2 (LMNB2 Products)
Background:	This gene encodes a B type nuclear lamin. The nuclear lamina consists of a two-dimensional matrix of proteins located next to the inner nuclear membrane. The lamin family of proteins

Target Details

make up the matrix and are highly conserved in evolution. During mitosis, the lamina matrix is reversibly disassembled as the lamin proteins are phosphorylated. Lamin proteins are thought to be involved in nuclear stability, chromatin structure and gene expression. Vertebrate lamins consist of two types, A and B. Mutations in this gene are associated with acquired partial lipodystrophy. [provided by RefSeq, May 2012],EPM9, LAMB2, LMN2,Apoptosis,Cell Biology & Developmental Biology,Cytoskeleton,Cytoskeleton_Intermediate Filaments,Epigenetics & Nuclear Signaling,LMNB2

Molecular Weight: 68 kDa

Gene ID: 84823

UniProt: [Q03252](#)

Pathways: [Apoptosis, Caspase Cascade in Apoptosis](#)

Application Details

Application Notes: WB,1:500 - 1:2000,IHC,1:50 - 1:200,IF,1:50 - 1:200

Restrictions: For Research Use only

Handling

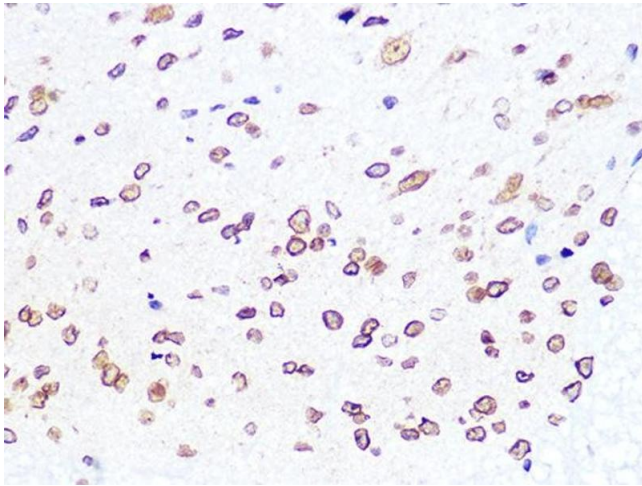
Buffer: PBS with 0.02 % sodium azide,0.05 % BSA,50 % glycerol, pH 7.3.

Preservative: Sodium azide

Precaution of Use: This product contains Sodium azide: a POISONOUS AND HAZARDOUS SUBSTANCE which should be handled by trained staff only.

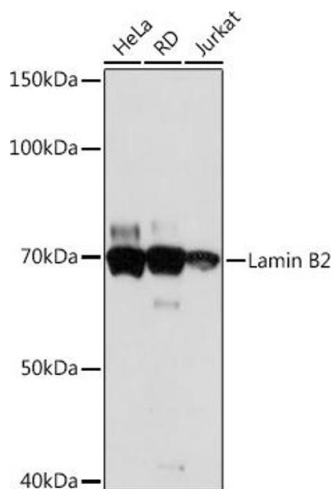
Storage: -20 °C

Storage Comment: Store at -20°C. Avoid freeze / thaw cycles.



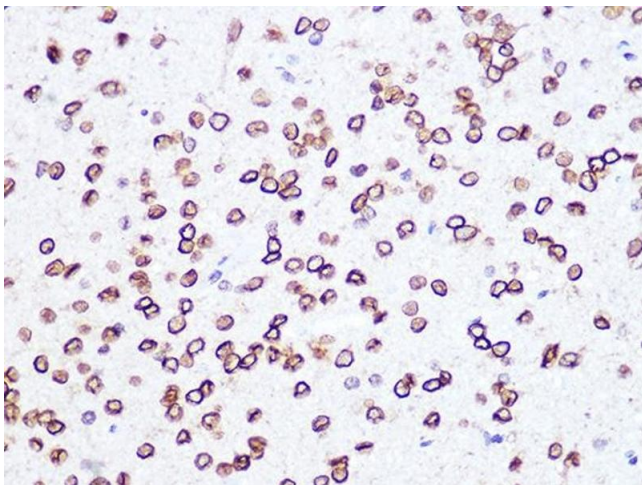
Immunohistochemistry

Image 1. Immunohistochemistry of paraffin-embedded mouse spinal cord using Lamin B2 Rabbit mAb (ABIN1679310, ABIN3019324, ABIN3019325 and ABIN7101750) at dilution of 1:100 (40x lens). Perform microwave antigen retrieval with 10 mM PBS buffer pH 7.2 before commencing with IHC staining protocol.



Western Blotting

Image 2. Western blot analysis of extracts of various cell lines, using Lamin B2 Rabbit mAb (ABIN1679310, ABIN3019324, ABIN3019325 and ABIN7101750) at 1:1000 dilution. Secondary antibody: HRP Goat Anti-Rabbit IgG (H+L) (ABIN1684268 and ABIN3020597) at 1:10000 dilution. Lysates/proteins: 25 µg per lane. Blocking buffer: 3 % nonfat dry milk in TBST. Detection: ECL Basic Kit (RM00020). Exposure time: 30s.



Immunohistochemistry

Image 3. Immunohistochemistry of paraffin-embedded rat brain using Lamin B2 Rabbit mAb (ABIN1679310, ABIN3019324, ABIN3019325 and ABIN7101750) at dilution of 1:100 (40x lens). Perform microwave antigen retrieval with 10 mM PBS buffer pH 7.2 before commencing with IHC staining protocol.

Please check the [product details page](#) for more images. Overall 5 images are available for ABIN7101750.