



[Go to Product page](#)

Datasheet for ABIN7101753

## anti-FHL1 antibody

### 2 Images

#### Overview

Quantity:	20 µL
Target:	FHL1
Reactivity:	Human
Host:	Rabbit
Clonality:	Monoclonal
Conjugate:	This FHL1 antibody is un-conjugated
Application:	Western Blotting (WB), Immunohistochemistry (IHC)

#### Product Details

Immunogen:	A synthesized peptide derived from human FHL1
Isotype:	IgG
Cross-Reactivity:	Human
Characteristics:	Monoclonal Antibodies
Purification:	Affinity purification

#### Target Details

Target:	FHL1
Alternative Name:	FHL1 ( <a href="#">FHL1 Products</a> )
Background:	This gene encodes a member of the four-and-a-half-LIM-only protein family. Family members contain two highly conserved, tandemly arranged, zinc finger domains with four highly

## Target Details

---

conserved cysteines binding a zinc atom in each zinc finger. Expression of these family members occurs in a cell- and tissue-specific mode and these proteins are involved in many cellular processes. Mutations in this gene have been found in patients with Emery-Dreifuss muscular dystrophy. Multiple alternately spliced transcript variants which encode different protein isoforms have been described.[provided by RefSeq, Nov 2009],FHL-1, FHL1A, FHL1B, FLH1A, KYOT, RBMX1A, RBMX1B, SLIM, SLIM-1, SLIM1, SLIMMER, XMPMA,Cardiovascular,Epigenetics & Nuclear Signaling,Heart,Heart\_Hypertrophy,FHL1

---

Molecular Weight: 30 kDa

---

Gene ID: 2273

---

UniProt: [Q13642](#)

## Application Details

---

---

Application Notes: WB,1:500 - 1:2000,IHC,1:50 - 1:200

---

Restrictions: For Research Use only

## Handling

---

---

Buffer: PBS with 0.02 % sodium azide,0.05 % BSA,50 % glycerol, pH 7.3.

---

Preservative: Sodium azide

---

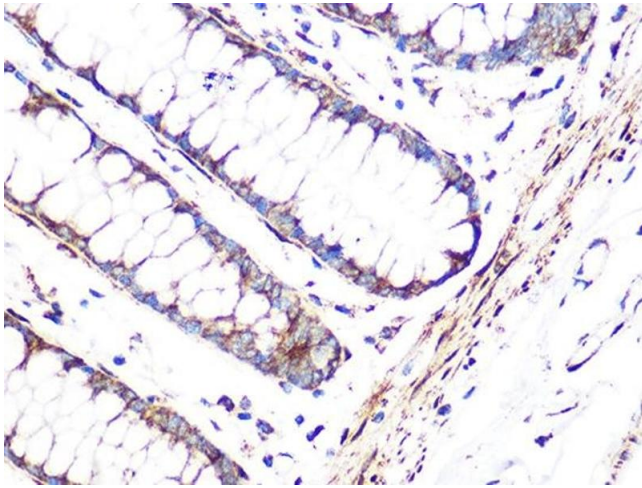
Precaution of Use: This product contains Sodium azide: a POISONOUS AND HAZARDOUS SUBSTANCE which should be handled by trained staff only.

---

Storage: -20 °C

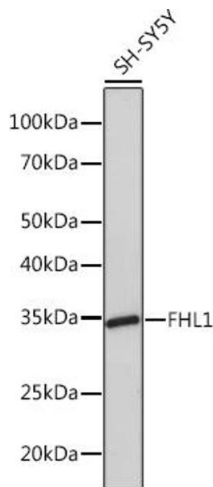
---

Storage Comment: Store at -20°C. Avoid freeze / thaw cycles.



### Immunohistochemistry

**Image 1.** Immunohistochemistry of paraffin-embedded human colon using FHL1 Rabbit mAb (ABIN1680536, ABIN3019332, ABIN3019333 and ABIN7101753) at dilution of 1:100 (40x lens). Perform microwave antigen retrieval with 10 mM Tris/EDTA buffer pH 9.0 before commencing with IHC staining protocol.



### Western Blotting

**Image 2.** Western blot analysis of extracts of SH-SY5Y cells, using FHL1 Rabbit mAb (ABIN1680536, ABIN3019332, ABIN3019333 and ABIN7101753) at 1:1000 dilution. Secondary antibody: HRP Goat Anti-Rabbit IgG (H+L) (ABIN1684268 and ABIN3020597) at 1:10000 dilution. Lysates/proteins: 25 µg per lane. Blocking buffer: 3 % nonfat dry milk in TBST. Detection: ECL Basic Kit (RM00020). Exposure time: 90s.