



[Go to Product page](#)

Datasheet for ABIN7101767

anti-PTGES3 antibody

5 Images

Overview

| | |
|--------------|--|
| Quantity: | 20 µL |
| Target: | PTGES3 |
| Reactivity: | Human |
| Host: | Rabbit |
| Clonality: | Monoclonal |
| Conjugate: | This PTGES3 antibody is un-conjugated |
| Application: | Western Blotting (WB), Immunofluorescence (IF) |

Product Details

| | |
|-------------------|---|
| Immunogen: | A synthesized peptide derived from human P23/PTGES3 |
| Isotype: | IgG |
| Cross-Reactivity: | Human, Mouse, Rat |
| Characteristics: | Monoclonal Antibodies |
| Purification: | Affinity purification |

Target Details

| | |
|-------------------|--|
| Target: | PTGES3 |
| Alternative Name: | PTGES3 (PTGES3 Products) |
| Background: | This gene encodes an enzyme that converts prostaglandin endoperoxide H2 (PGH2) to prostaglandin E2 (PGE2). This protein functions as a co-chaperone with heat shock protein 90 |

Target Details

(HSP90), localizing to response elements in DNA and disrupting transcriptional activation complexes. Alternative splicing results in multiple transcript variants. There are multiple pseudogenes of this gene on several different chromosomes. [provided by RefSeq, Feb 2016],P23, TEBP, cPGES,Cancer,Endocrine & Metabolism,Epigenetics & Nuclear Signaling,Lipid Metabolism,Signal Transduction,PTGES3

Molecular Weight: 23 kDa

Gene ID: 10728

UniProt: [Q15185](#)

Pathways: [Intracellular Steroid Hormone Receptor Signaling Pathway](#), [Cellular Glucan Metabolic Process](#)

Application Details

Application Notes: WB,1:500 - 1:2000,IF,1:50 - 1:200

Restrictions: For Research Use only

Handling

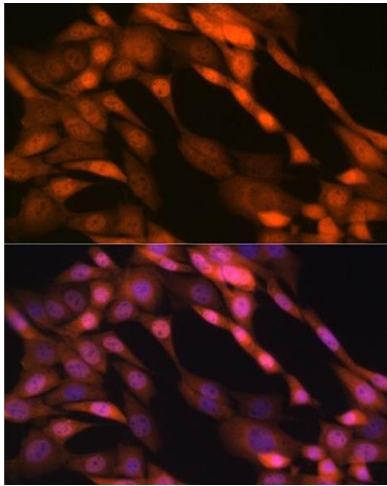
Buffer: PBS with 0.02 % sodium azide,0.05 % BSA,50 % glycerol, pH 7.3.

Preservative: Sodium azide

Precaution of Use: This product contains Sodium azide: a POISONOUS AND HAZARDOUS SUBSTANCE which should be handled by trained staff only.

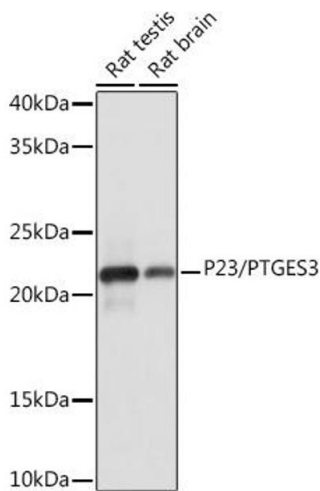
Storage: -20 °C

Storage Comment: Store at -20°C. Avoid freeze / thaw cycles.



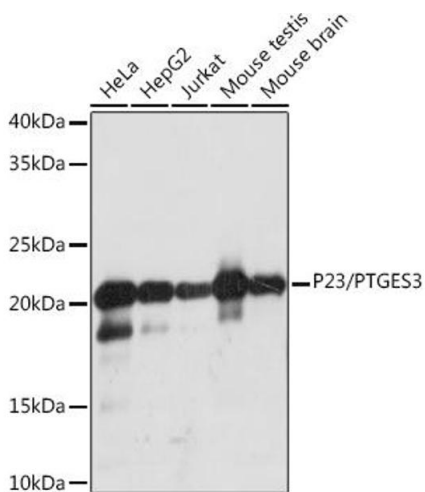
Immunofluorescence

Image 1. Immunofluorescence analysis of NIH-3T3 cells using P23/PTGES3 Rabbit mAb (ABIN1679503, ABIN3019390, ABIN3019391 and ABIN7101767) at dilution of 1:100 (40x lens). Blue: DAPI for nuclear staining.



Western Blotting

Image 2. Western blot analysis of extracts of various cell lines, using P23/PTGES3 Rabbit mAb (ABIN1679503, ABIN3019390, ABIN3019391 and ABIN7101767) at 1:1000 dilution. Secondary antibody: HRP Goat Anti-Rabbit IgG (H+L) (ABIN1684268 and ABIN3020597) at 1:10000 dilution. Lysates/proteins: 25 µg per lane. Blocking buffer: 3 % nonfat dry milk in TBST. Detection: ECL Basic Kit (RM00020). Exposure time: 3s.



Western Blotting

Image 3. Western blot analysis of extracts of various cell lines, using P23/PTGES3 Rabbit mAb (ABIN1679503, ABIN3019390, ABIN3019391 and ABIN7101767) at 1:1000 dilution. Secondary antibody: HRP Goat Anti-Rabbit IgG (H+L) (ABIN1684268 and ABIN3020597) at 1:10000 dilution. Lysates/proteins: 25 µg per lane. Blocking buffer: 3 % nonfat dry milk in TBST. Detection: ECL Basic Kit (RM00020). Exposure time: 3s.

Please check the [product details page](#) for more images. Overall 5 images are available for ABIN7101767.