



[Go to Product page](#)

Datasheet for ABIN7101768

## anti-UBE2C antibody

### 2 Images

#### Overview

|              |  |
|--------------|--|
| Quantity:    | 20 µL  |
| Target:      | UBE2C  |
| Reactivity:  | Human  |
| Host:        | Rabbit   |
| Clonality:   | Monoclonal                                     |
| Conjugate:   | This UBE2C antibody is un-conjugated           |
| Application: | Western Blotting (WB), Immunofluorescence (IF) |

#### Product Details

|                   |  |
|-------------------|--|
| Immunogen:        | A synthesized peptide derived from human UBE2C |
| Isotype:          | IgG  |
| Cross-Reactivity: | Human  |
| Characteristics:  | Monoclonal Antibodies                          |
| Purification:     | Affinity purification                          |

#### Target Details

|                   |   |
|-------------------|---|
| Target:           | UBE2C   |
| Alternative Name: | UBE2C ( <a href="#">UBE2C Products</a> )  |
| Background:       | The modification of proteins with ubiquitin is an important cellular mechanism for targeting abnormal or short-lived proteins for degradation. Ubiquitination involves at least three classes |

## Target Details

---

of enzymes: ubiquitin-activating enzymes, ubiquitin-conjugating enzymes, and ubiquitin-protein ligases. This gene encodes a member of the E2 ubiquitin-conjugating enzyme family. The encoded protein is required for the destruction of mitotic cyclins and for cell cycle progression, and may be involved in cancer progression. Multiple transcript variants encoding different isoforms have been found for this gene. Pseudogenes of this gene have been defined on chromosomes 4, 14, 15, 18, and 19. [provided by RefSeq, Aug 2013],UBCH10, dJ447F3.2,Apoptosis,Cell Biology & Developmental Biology,Epigenetics & Nuclear Signaling,Ubiquitin,Ubiquitin\_Ubiquitin-Proteasome Signaling Pathway,UBE2C

---

Molecular Weight: 20 kDa

---

Gene ID: 11065

---

UniProt: [O00762](#)

---

Pathways: [Ubiquitin Proteasome Pathway](#)

## Application Details

---

---

Application Notes: WB,1:500 - 1:2000,IF,1:50 - 1:200

---

Restrictions: For Research Use only

## Handling

---

---

Buffer: PBS with 0.02 % sodium azide,0.05 % BSA,50 % glycerol, pH 7.3.

---

Preservative: Sodium azide

---

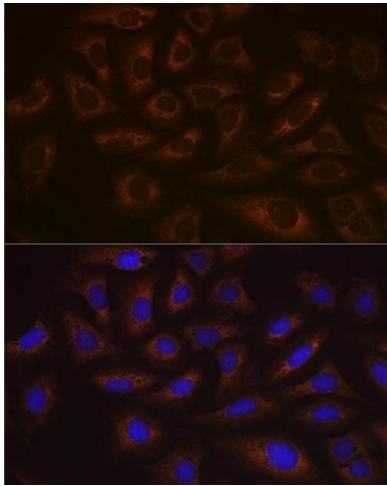
Precaution of Use: This product contains Sodium azide: a POISONOUS AND HAZARDOUS SUBSTANCE which should be handled by trained staff only.

---

Storage: -20 °C

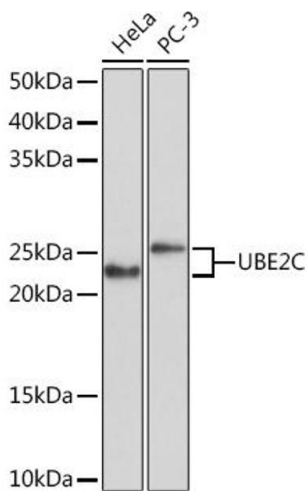
---

Storage Comment: Store at -20°C. Avoid freeze / thaw cycles.



### Immunofluorescence

**Image 1.** Immunofluorescence analysis of U-2 OS cells using UBE2C Rabbit mAb (ABIN1680590, ABIN3019392, ABIN3019393 and ABIN7101768) at dilution of 1:100 (40x lens). Blue: DAPI for nuclear staining.



### Western Blotting

**Image 2.** Western blot analysis of extracts of various cell lines, using UBE2C Rabbit mAb (ABIN1680590, ABIN3019392, ABIN3019393 and ABIN7101768) at 1:1000 dilution. Secondary antibody: HRP Goat Anti-Rabbit IgG (H+L) (ABIN1684268 and ABIN3020597) at 1:10000 dilution. Lysates/proteins: 25 µg per lane. Blocking buffer: 3 % nonfat dry milk in TBST. Detection: ECL Basic Kit (RM00020). Exposure time: 1s.