



Datasheet for ABIN710471  
**anti-MYOD1 antibody (pSer200)**



[Go to Product page](#)

1 Image

Overview

Quantity:	100 µL
Target:	MYOD1
Binding Specificity:	pSer200
Reactivity:	Mouse
Host:	Rabbit
Clonality:	Polyclonal
Conjugate:	This MYOD1 antibody is un-conjugated
Application:	Western Blotting (WB), ELISA, Immunohistochemistry (Frozen Sections) (IHC (fro)), Immunofluorescence (Paraffin-embedded Sections) (IF (p)), Immunofluorescence (Cultured Cells) (IF (cc))

Product Details

Immunogen:	KLH conjugated synthetic phosphopeptide derived from human MyoD1 around the phosphorylation site of Ser200
Isotype:	IgG
Cross-Reactivity:	Mouse
Predicted Reactivity:	Human,Rat,Cow,Pig
Purification:	Purified by Protein A.

Target Details

Target:	MYOD1
---------	-------

## Target Details

---

Alternative Name:	MyoD1 ( <a href="#">MYOD1 Products</a> )
Background:	<p>Synonyms: MYOD1phospho S200,Myogenic dferentiation 1, AI503393, bHLHc1, MD1, MGC156574, MYF3, MYOD, MYOD1, PUM, MYOD1_HUMAN.</p> <p>Background: MyoD1 belongs to the basic helix-loop-helix family of transcription factors and the myogenic factors subfamily. It regulates muscle cell differentiation by inducing cell cycle arrest, a prerequisite for myogenic initiation. Myod1 is essential for repair of damaged tissue. It activates its own transcription which may stabilize commitment to myogenesis.</p>
Gene ID:	4654
Pathways:	<a href="#">Regulation of Muscle Cell Differentiation, Skeletal Muscle Fiber Development</a>

## Application Details

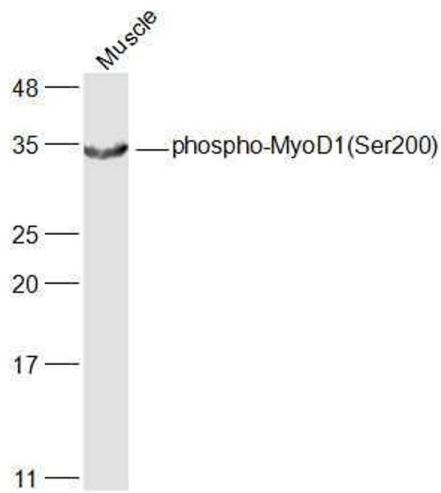
---

Application Notes:	WB 1:300-5000 ELISA 1:500-1000 IHC-F 1:100-500 IF(IHC-P) 1:50-200 IF(IHC-F) 1:50-200 IF(ICC) 1:50-200
Restrictions:	For Research Use only

## Handling

---

Format:	Liquid
Concentration:	1 µg/µL
Buffer:	0.01M TBS( pH 7.4) with 1 % BSA, 0.02 % Proclin300 and 50 % Glycerol.
Preservative:	ProClin
Precaution of Use:	This product contains ProClin: a POISONOUS AND HAZARDOUS SUBSTANCE, which should be handled by trained staff only.
Storage:	4 °C,-20 °C
Storage Comment:	Shipped at 4°C. Store at -20°C for one year. Avoid repeated freeze/thaw cycles.
Expiry Date:	12 months



**Image 1.** Mouse muscle lysates probed with MyoD1(Ser200) Polyclonal Antibody, Unconjugated at 1:500 dilution and 4°C overnight incubation. Followed by conjugated secondary antibody incubation at 1:10000 for 60 min at 37°C.