

Datasheet for ABIN710726
anti-NFKBIE antibody (pSer157)[Go to Product page](#)

2 Images

Overview

Quantity:	100 µL
Target:	NFKBIE
Binding Specificity:	pSer157
Reactivity:	Human
Host:	Rabbit
Clonality:	Polyclonal
Conjugate:	This NFKBIE antibody is un-conjugated
Application:	Western Blotting (WB), ELISA, Immunofluorescence (Cultured Cells) (IF (cc)), Immunofluorescence (Paraffin-embedded Sections) (IF (p)), Immunohistochemistry (Paraffin- embedded Sections) (IHC (p)), Immunohistochemistry (Frozen Sections) (IHC (fro))

Product Details

Immunogen:	KLH conjugated synthetic phosphopeptide derived from human NFKBIE around the phosphorylation site of Ser157
Isotype:	IgG
Predicted Reactivity:	Human,Cow
Purification:	Purified by Protein A.

Target Details

Target:	NFKBIE
Alternative Name:	Ikb epsilon (NFKBIE Products)

Target Details

Background:	<p>Synonyms: NFKBIE phospho S157, IKB epsilon Ser157, IKB epsilon S, p-IKB epsilon Ser157, p-IKB epsilon S157, I kappa B epsilon, IkappaBepsilon, Ikb E, IKBE, IKB epsilon, MGC72568, NF kappa B inhibitor epsilon, NF kappa BIE, NFkappa BIE, NFkappaB inhibitor epsilon, NFKBIE, Nuclear factor of kappa light polypeptide gene enhancer in B cells inhibitor epsilon, OTTHUMP00000016522, Slc35b2, solute carrier family 35, member B2.</p> <p>Background: NFKB1 or NFKB2 is bound to REL, RELA, or RELB to form the NFKB complex. The NFKB complex is inhibited by I-kappa-B proteins (NFKBIA, or NFKBIB), which inactivate NF-kappa-B by trapping it in the cytoplasm. Phosphorylation of serine residues on the I-kappa-B proteins by kinases (IKBKA, or IKBKB) marks them for destruction via the ubiquitination pathway, thereby allowing activation of the NF-kappa-B complex. Activated NFKB complex translocates into the nucleus and binds DNA at kappa-B-binding motifs such as 5-prime GGGRNNYYCC 3-prime or 5-prime HGGARNYYCC 3-prime (where H is A, C, or T, R is an A or G purine, and Y is a C or T pyrimidine). For some genes, activation requires NFKB interaction with other transcription factors, such as STAT, AP1 (JUN), and NFAT.</p>
Gene ID:	4794
Pathways:	NF-kappaB Signaling , Maintenance of Protein Location

Application Details

Application Notes:	WB 1:300-5000 ELISA 1:500-1000 IHC-P 1:200-400 IHC-F 1:100-500 IF(IHC-P) 1:50-200 IF(IHC-F) 1:50-200 IF(ICC) 1:50-200
Restrictions:	For Research Use only

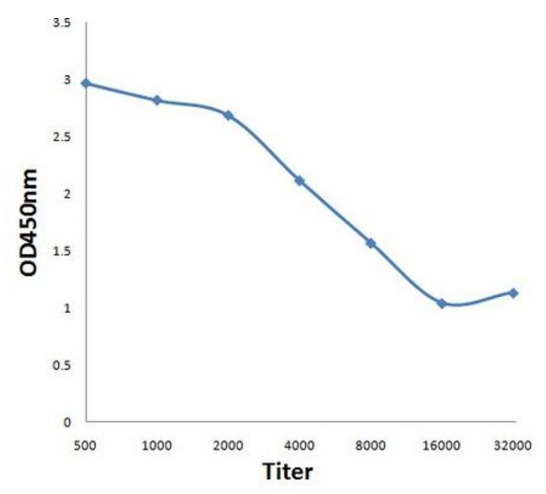
Handling

Format:	Liquid
Concentration:	1 µg/µL
Buffer:	0.01M TBS(pH 7.4) with 1 % BSA, 0.02 % Proclin300 and 50 % Glycerol.
Preservative:	ProClin

Handling

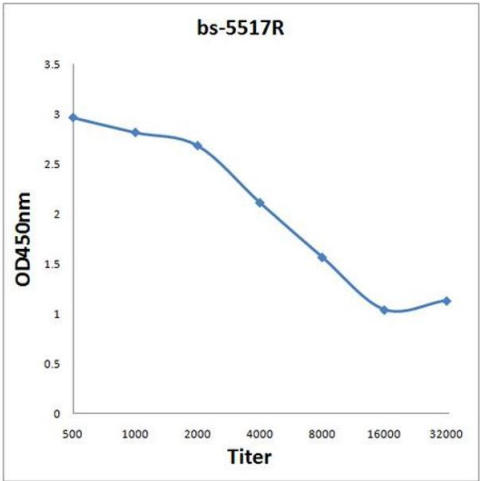
Precaution of Use:	This product contains ProClin: a POISONOUS AND HAZARDOUS SUBSTANCE, which should be handled by trained staff only.
Storage:	4 °C,-20 °C
Storage Comment:	Shipped at 4°C. Store at -20°C for one year. Avoid repeated freeze/thaw cycles.
Expiry Date:	12 months

Images



ELISA

Image 1. Antigen: 0.2ug/100ul, Primary: Antiserum, 1:500, 1:1000, 1:2000, 1:4000, 1:8000, 1:16000, 1:32000, Secondary: HRP conjugated Goat Anti-Rabbit IgG at 1: 5000, TMB staining Read the data in Microplate Reader by 450nm,



ELISA

Image 2. Antigen: 0.2 µg/100 µL Primary: Antiserum, 1:500, 1:1000, 1:2000, 1:4000, 1:8000, 1:16000, 1:32000; Secondary: HRP conjugated Goat Anti-Rabbit IgG at 1: 5000; TMB staining; Read the data in Microplate Reader by 450nm