

Datasheet for ABIN710801  
**anti-NDEL1 antibody (pSer231)**[Go to Product page](#)

## 1 Image

## Overview

Quantity:	100 µL
Target:	NDEL1
Binding Specificity:	pSer231
Reactivity:	Rat
Host:	Rabbit
Clonality:	Polyclonal
Conjugate:	This NDEL1 antibody is un-conjugated
Application:	Immunofluorescence (Cultured Cells) (IF (cc)), Immunofluorescence (Paraffin-embedded Sections) (IF (p)), ELISA, Immunohistochemistry (Paraffin-embedded Sections) (IHC (p)), Immunohistochemistry (Frozen Sections) (IHC (fro))

## Product Details

Immunogen:	KLH conjugated synthetic phosphopeptide derived from human NDEL1 around the phosphorylation site of Ser231
Isotype:	IgG
Cross-Reactivity:	Rat
Predicted Reactivity:	Human,Mouse,Dog,Cow,Pig,Horse,Chicken,Rabbit
Purification:	Purified by Protein A.

## Target Details

Target:	NDEL1
---------	-------

## Target Details

Alternative Name:	NDEL1 ( <a href="#">NDEL1 Products</a> )
Background:	<p>Synonyms: NDEL1phospho S231, Nudelphospho S231, A. nidulans, DKFZp451M0318, ENDOOLIGOPEPTIDASE A, EOPA, MITAP 1, MITAP1, Mitosin associated protein 1, Mitosin associated protein MITAP1, Mitosin-associated protein 1, Ndel 1, Ndel1, NDEL1_HUMAN, Nuclear distribution gene E like homolog 1, Nuclear distribution protein nudE like 1, Nuclear distribution protein nudE-like 1, NUDE like protein, NudE nuclear distribution gene E homolog like 1 A. nidulans, NudE nuclear distribution gene E homolog like 1, NUDEL, Protein Nudel.</p> <p>Background: Nudel is important for normal cortical development. It is involved in microtubule organization, nuclear translocation, and neuronal positioning in concert with various other factors (including Lis1, Pafah1b1, Pafah1b2, dynein, dynorphin A and cdk5). Western blot analysis of mouse tissues shows abundant expression of Nudel in brain and testis, and much lower expression in heart, liver, kidney, and skeletal muscle. In fractionated rat brain, Nudel and Lis1 are both found in fractions enriched for postsynaptic density proteins. Immunostaining of embryonic day 18 mouse brain sections revealed staining of migrating neurons and thalamocortical axons of the intermediate zone of the developing cerebral cortex, as well as several other developing brain regions. The deduced protein contains 345 amino acids and has a calculated molecular mass of 38.4 kDa. It has a coiled coil motif (residues 19 to 201), followed by several potential phosphorylation sites for casein kinase II, protein kinase C or CDK5. Nudel shares about 50 % identity with mouse and human NUDE proteins.</p>
Gene ID:	81565
Pathways:	<a href="#">Regulation of Cell Size</a>

## Application Details

Application Notes:	ELISA 1:500-1000 IHC-P 1:200-400 IHC-F 1:100-500 IF(IHC-P) 1:50-200 IF(IHC-F) 1:50-200 IF(ICC) 1:50-200
Restrictions:	For Research Use only

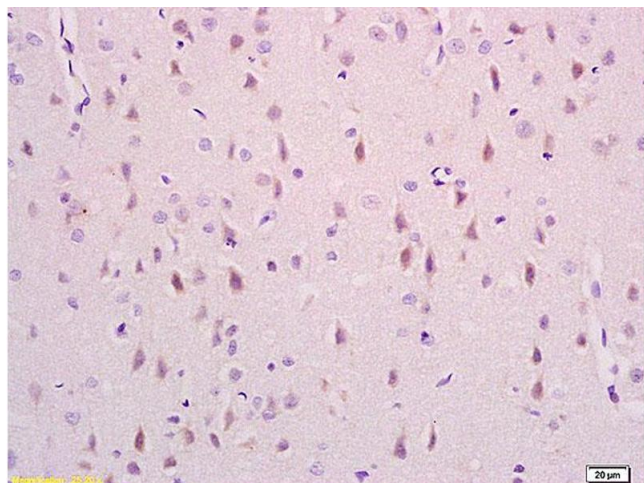
## Handling

Format:	Liquid
---------	--------

## Handling

Concentration:	1 µg/µL
Buffer:	0.01M TBS( pH 7.4) with 1 % BSA, 0.02 % Proclin300 and 50 % Glycerol.
Preservative:	ProClin
Precaution of Use:	This product contains ProClin: a POISONOUS AND HAZARDOUS SUBSTANCE, which should be handled by trained staff only.
Storage:	4 °C,-20 °C
Storage Comment:	Shipped at 4°C. Store at -20°C for one year. Avoid repeated freeze/thaw cycles.
Expiry Date:	12 months

## Images



### Immunohistochemistry

**Image 1.** Formalin-fixed and paraffin embedded rat brain labeled with Anti phospho-NDEL1(Ser231) Polyclonal Antibody, Unconjugated (ABIN710801) at 1:200 followed by conjugation to the secondary antibody and DAB staining.