

Datasheet for ABIN711626
anti-SHP1 antibody (pTyr536)

2 Images

[Go to Product page](#)

Overview

Quantity:	100 µL
Target:	SHP1 (PTPN6)
Binding Specificity:	pTyr536
Reactivity:	Human, Mouse
Host:	Rabbit
Clonality:	Polyclonal
Conjugate:	This SHP1 antibody is un-conjugated
Application:	Western Blotting (WB), Flow Cytometry (FACS), Immunohistochemistry (Paraffin-embedded Sections) (IHC (p)), Immunofluorescence (Paraffin-embedded Sections) (IF (p)), Immunofluorescence (Cultured Cells) (IF (cc)), Immunohistochemistry (Frozen Sections) (IHC (fro))

Product Details

Immunogen:	KLH conjugated synthetic phosphopeptide derived from human PTPN6 around the phosphorylation site of Tyr536 [SE(p-Y)GN]
Isotype:	IgG
Cross-Reactivity:	Human, Mouse
Predicted Reactivity:	Dog,Horse
Purification:	Purified by Protein A.

Target Details

Target:	SHP1 (PTPN6)
Alternative Name:	PTPN6 (PTPN6 Products)
Background:	<p>Synonyms: SHP-1Tyr536, PTPN6phospho Y536, SHP1phospho Y536, 70 kda SHP1L protein, HCP, HCPH, Hematopoietic cell phosphatase, Hematopoietic cell protein tyrosine phosphatase, Hematopoietic cell protein-tyrosine phosphatase, HPTP1C, Protein tyrosine phosphatase 1C, Protein tyrosine phosphatase non receptor type 6, Protein tyrosine phosphatase SHP1, PTP1C, PTPN6, SH PTP 1, SHP1, SHP1L, PTN6_HUMAN.</p> <p>Background: SHP1 is a member of the non receptor protein tyrosine phosphatase subfamily. The PTP family comprises of at least 37 proteins, characterized by a catalytic phosphatase domain of approximately 240 amino acids, and includes both transmembrane and cytosolic enzymes. PTP1B is cytosolic. The PTPs have high substrate specificity for phosphotyrosyl proteins, at the primary sequence level sharing little similarity with the protein serine phosphatases, protein threonine phosphatases, or the acid and alkaline phosphatases. SHP1 is implicated in the control of tyrosine kinase signalling pathways in cellular proliferation, with a potential role in cancer.</p>
Gene ID:	5777
UniProt:	P29350
Pathways:	JAK-STAT Signaling , TCR Signaling , TLR Signaling , Nuclear Receptor Transcription Pathway , Positive Regulation of Peptide Hormone Secretion , Steroid Hormone Mediated Signaling Pathway , Response to Growth Hormone Stimulus , Regulation of Leukocyte Mediated Immunity , CXCR4-mediated Signaling Events , Signaling Events mediated by VEGFR1 and VEGFR2 , BCR Signaling

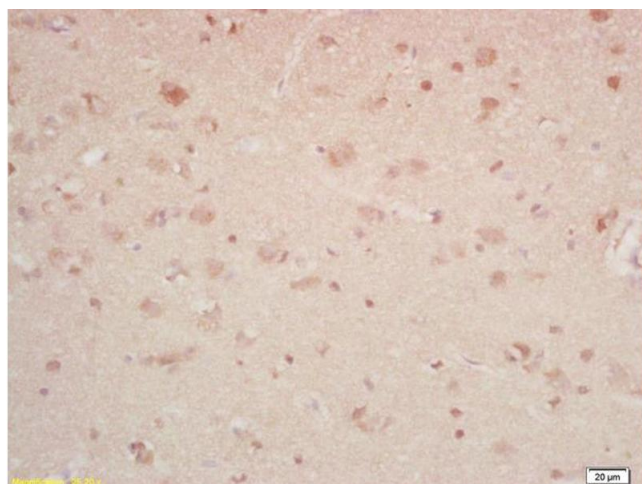
Application Details

Application Notes:	WB 1:300-5000 FCM 1:20-100 IHC-P 1:200-400 IHC-F 1:100-500 IF(IHC-P) 1:50-200 IF(ICC) 1:50-200
Restrictions:	For Research Use only

Handling

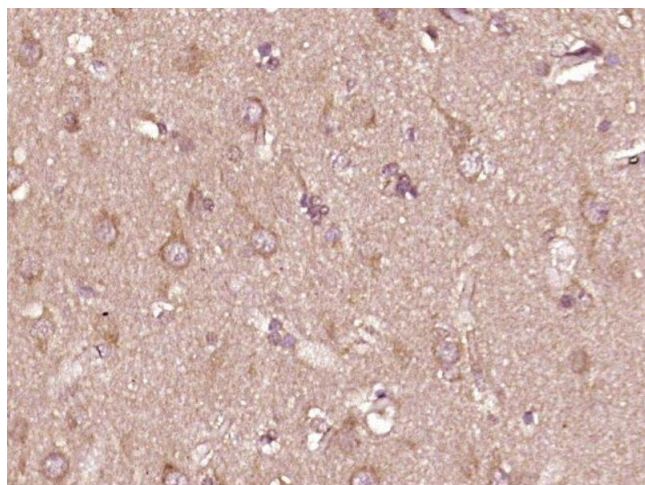
Format:	Liquid
Concentration:	1 µg/µL
Buffer:	0.01M TBS(pH 7.4) with 1 % BSA, 0.02 % Proclin300 and 50 % Glycerol.
Preservative:	ProClin
Precaution of Use:	This product contains ProClin: a POISONOUS AND HAZARDOUS SUBSTANCE, which should be handled by trained staff only.
Storage:	4 °C,-20 °C
Storage Comment:	Shipped at 4°C. Store at -20°C for one year. Avoid repeated freeze/thaw cycles.
Expiry Date:	12 months

Images



Immunohistochemistry

Image 1. Formalin-fixed and paraffin embedded rat brain labeled with Rabbit Anti phospho-PTPN6(Tyr536) Polyclonal Antibody, Unconjugated (ABIN711626) at 1:200 followed by conjugation to the secondary antibody and DAB staining



Immunohistochemistry (Paraffin-embedded Sections)

Image 2. Paraformaldehyde-fixed, paraffin embedded human glioma, Antigen retrieval by boiling in sodium citrate buffer (pH6) for 15min, Block endogenous peroxidase by 3% hydrogen peroxide for 30 minutes, Blocking buffer (normal goat serum) at 37°C for 20min, Antibody incubation with PTPN6(Tyr536) Polyclonal Antibody (bs-5577R) at 1:400 overnight at 4°C, followed by a conjugated secondary and DAB staining.