



[Go to Product page](#)

Datasheet for ABIN711971
anti-TSC1 antibody (pSer505)

1 Image

1 Publication

Overview

Quantity:	100 µL
Target:	TSC1
Binding Specificity:	pSer505
Reactivity:	Human, Mouse, Sheep
Host:	Rabbit
Clonality:	Polyclonal
Conjugate:	This TSC1 antibody is un-conjugated
Application:	ELISA, Western Blotting (WB), Immunofluorescence (Paraffin-embedded Sections) (IF (p)), Immunofluorescence (Cultured Cells) (IF (cc)), Immunohistochemistry (Paraffin-embedded Sections) (IHC (p)), Immunohistochemistry (Frozen Sections) (IHC (fro))

Product Details

Immunogen:	KLH conjugated synthetic phosphopeptide derived from human TSC1 around the phosphorylation site of Ser505 [FD(p-S)PF]
Isotype:	IgG
Cross-Reactivity:	Human, Mouse, Sheep
Predicted Reactivity:	Rat,Dog,Cow,Pig,Horse,Chicken,Rabbit
Purification:	Purified by Protein A.

Target Details

Target:	TSC1
---------	------

Target Details

Alternative Name: TSC1 ([TSC1 Products](#))

Background: Synonyms: TSC1phospho S505, LAM, TSC1, Tuberous sclerosis 1 protein.
Background: Hamartin, or TSC1, is a suspected tumor suppressor implicated in the disease tuberous sclerosis 1. It is a negative regulator of cell division controlling the transition from G0/G1 to S phase, and it seems to act through the phosphatidylinositol 3 kinase/Akt pathway. TSC1 interacts with tuberin m(TSC2), which is thought to be a GAP (GTPase Activating Protein) for the Rap1 and Rab5 small G Proteins. The Hamartin/Tuberin complex has been shown to inhibit mTor. Hamartin has also been shown to interact with ERM (Ezrin-Radixin-Moesin) proteins and with F-actin, suggesting a role for TSC proteins in modulation of cell adhesion and morphology.

Gene ID: 7248

Pathways: [RTK Signaling](#), [AMPK Signaling](#), [Regulation of Cell Size](#), [Tube Formation](#)

Application Details

Application Notes: WB 1:300-5000
ELISA 1:500-1000
IHC-P 1:200-400
IHC-F 1:100-500
IF(IHC-P) 1:50-200
IF(IHC-F) 1:50-200
IF(ICC) 1:50-200

Restrictions: For Research Use only

Handling

Format: Liquid

Concentration: 1 µg/µL

Buffer: 0.01M TBS(pH 7.4) with 1 % BSA, 0.02 % Proclin300 and 50 % Glycerol.

Preservative: ProClin

Precaution of Use: This product contains ProClin: a POISONOUS AND HAZARDOUS SUBSTANCE, which should be handled by trained staff only.

Storage: 4 °C,-20 °C

Handling

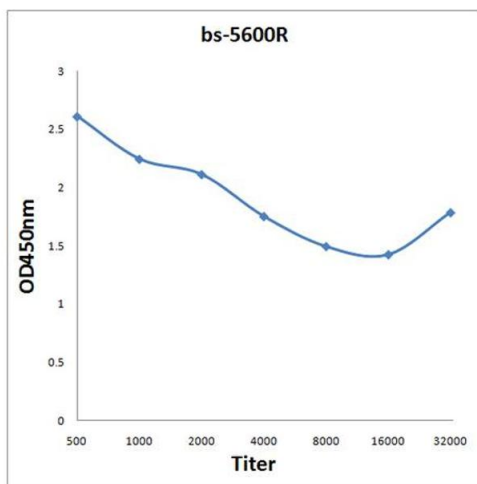
Storage Comment: Shipped at 4°C. Store at -20°C for one year. Avoid repeated freeze/thaw cycles.

Expiry Date: 12 months

Publications

Product cited in: Cao, Wei, Liu, Wang, Wu, Xie, Capellini, Zhang, Zhao, Li, Zhong, Wang, Lu, Liu, Zhang, Du, Zhang, Du: "DNA methylation Landscape of body size variation in sheep." in: **Scientific reports**, Vol. 5, pp. 13950, (2016) ([PubMed](#)).

Images



ELISA

Image 1. Antigen: 0.2 µg/100 µL Primary: Antiserum, 1:500, 1:1000, 1:2000, 1:4000, 1:8000, 1:16000, 1:32000; Secondary: HRP conjugated Goat-Anti-Rabbit IgG at 1: 5000; TMB staining; Read the data in MicroplateReader by 450