



[Go to Product page](#)

Datasheet for ABIN711986

anti-Tryptophan Hydroxylase 1 antibody (pSer260)

1 Image

Overview

Quantity:	100 µL
Target:	Tryptophan Hydroxylase 1 (TPH1)
Binding Specificity:	pSer260
Reactivity:	Human, Mouse, Rat
Host:	Rabbit
Clonality:	Polyclonal
Conjugate:	This Tryptophan Hydroxylase 1 antibody is un-conjugated
Application:	Western Blotting (WB), ELISA

Product Details

Immunogen:	KLH conjugated synthetic phosphopeptide derived from human TPH around the phosphorylation site of Ser260
Isotype:	IgG
Cross-Reactivity:	Human, Mouse, Rat
Predicted Reactivity:	Dog,Cow,Sheep,Horse,Rabbit
Purification:	Purified by Protein A.

Target Details

Target:	Tryptophan Hydroxylase 1 (TPH1)
Alternative Name:	TPH (TPH1 Products)

Target Details

Background: Synonyms: Tph1phospho S260, TPH phospho Ser260, p-TPH Ser260, MGC119994, TPH 1, TPH, TPH1, TPRH, Tryptophan 5 hydroxylase 1, Tryptophan 5 monooxygenase 1, Tryptophan 5 monooxygenase, Tryptophan hydroxylase 1, Tryptophan 5-hydroxylase 1, TPH1_HUMAN.
Background: This gene encodes a member of the aromatic amino acid hydroxylase family. The encoded protein catalyzes the first and rate limiting step in the biosynthesis of serotonin, an important hormone and neurotransmitter. Mutations in this gene have been associated with an elevated risk for a variety of diseases and disorders, including schizophrenia, somatic anxiety, anger-related traits, bipolar disorder, suicidal behavior, addictions, and others.[provided by RefSeq, Apr 2009].

Gene ID: 7166

Pathways: [Feeding Behaviour](#)

Application Details

Application Notes: WB 1:300-5000
ELISA 1:500-1000

Restrictions: For Research Use only

Handling

Format: Liquid

Concentration: 1 µg/µL

Buffer: 0.01M TBS(pH 7.4) with 1 % BSA, 0.02 % Proclin300 and 50 % Glycerol.

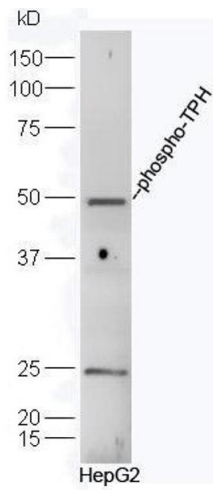
Preservative: ProClin

Precaution of Use: This product contains ProClin: a POISONOUS AND HAZARDOUS SUBSTANCE, which should be handled by trained staff only.

Storage: 4 °C,-20 °C

Storage Comment: Shipped at 4°C. Store at -20°C for one year. Avoid repeated freeze/thaw cycles.

Expiry Date: 12 months



Western Blotting

Image 1. HepG2 cell lysates probed with Rabbit Anti-TPH(Ser260) Polyclonal Antibody, Unconjugated at 1:500 for 90 min at 37°C.