

Datasheet for ABIN7121592  
**anti-HCP antibody (HMW, LMW)**



[Go to Product page](#)

2 Images

## Overview

Quantity:	100 µg
Target:	HCP
Binding Specificity:	HMW, LMW
Reactivity:	E. coli
Host:	Rabbit
Clonality:	Polyclonal
Conjugate:	This HCP antibody is un-conjugated
Application:	Western Blotting (WB), ELISA, Two Dimensional Polyacrylamide Gel Electrophoresis (2D-PAGE)

## Product Details

Purpose:	E.coli Combined HCP Antibody
Immunogen:	Anti-Host Cell Proteins Antibody was prepared by repeated immunizations with a full range of high molecular weight (HMW) and low molecular weight (LMW) proteins from E.Coli (BL21).
Cross-Reactivity (Details):	The anti-sera reactivity is directed against E.coli Host Cell Proteins. Cross-reactivity with other species is likely but has not been determined. Reactivity against homologues from other sources is not known.
Characteristics:	Anti-Host Cell Proteins Antibody recognizes high and low molecular weight protein fractions from E.coli. This antibody has been validated by 2D electrophoresis western blot to assure highest possible coverage of E.coli HCP. Host Cell Proteins are process-related impurities derived from a host cell expression system that may be present in trace amounts in a final drug substance. HCP Antibodies are used to detect impurities in biologically-based therapeutics.

## Product Details

Detecting impurities often unseen by 1-D electrophoresis, a 2D electrophoresis western blot analysis delivers more complete insight into the immunocoverage of protein components of the host cell lysate.

**Purification:** E.coli Combined HCP Antibody is directed against high molecular weight and low molecular weight E.coli Host Cell Proteins. This whole rabbit antiserum was prepared by delipidation and defibrination followed by the addition of buffer salts and preservative.

## Target Details

**Target:** HCP

**Alternative Name:** Host Cell Proteins ([HCP Products](#))

## Application Details

**Application Notes:** Anti-Host Cell Proteins Antibody detects over 300 E.coli proteins and has been tested in ELISA, 2D-Page and western blot.

**Restrictions:** For Research Use only

## Handling

**Format:** Liquid

**Concentration:** Lot specific

**Buffer:** 0.02 M Potassium Phosphate, 0.15 M Sodium Chloride, pH 7.2, 0.01% (w/v) Sodium Azide

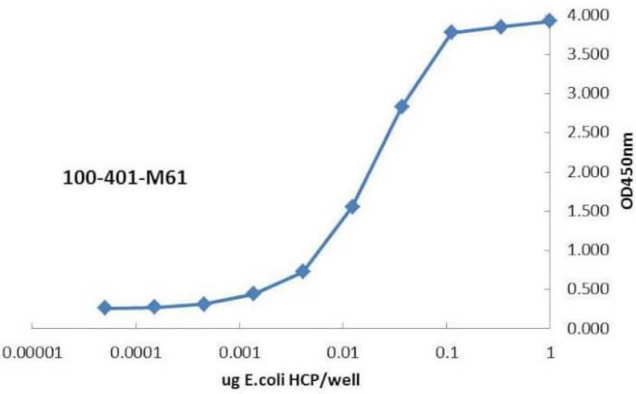
**Preservative:** Sodium azide

**Precaution of Use:** This product contains Sodium azide: a POISONOUS AND HAZARDOUS SUBSTANCE which should be handled by trained staff only.

**Storage:** -20 °C

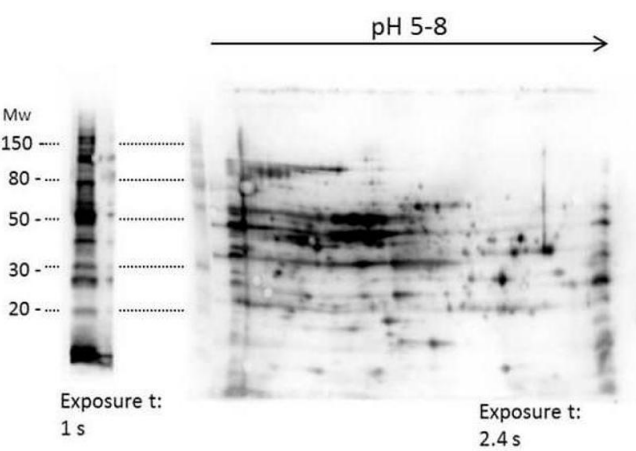
**Storage Comment:** Store vial at -20° C prior to opening. Aliquot contents and freeze at -20° C or below for extended storage. Avoid cycles of freezing and thawing. Centrifuge product if not completely clear after standing at room temperature. This product is stable for several weeks at 4° C as an undiluted liquid. Dilute only prior to immediate use.

**Expiry Date:** 12 months



ELISA

**Image 1.** ELISA of Rabbit anti-Host Cell Protein antibody. Antigen: BSA conjugates of HCP. Coating amount: 1 µg per well titrated 1:3 in 1XPBS. Primary antibody: Anti-HCP antibody at 100 ng/well. Secondary antibody: Peroxidase rabbit secondary antibody at 1:10,000. Substrate: TMB (p/n TMBE-0100) for 30 min.



Western Blotting

**Image 2.** 2D Western Blot of anti-E.coli Host Cell Protein antibody. Load: 35 µg Total HCP. Primary antibody: Rabbit anti-HCP antibody at 1:2000 for overnight at 4 °C. Secondary antibody: Goat anti-rabbit secondary antibody at 1:10,000 for 30 min at RT. Block: MB-070 for 1 hour at RT.