

Datasheet for ABIN7121691

**ADAM21 Protein (AA 200-400) (His tag)**[Go to Product page](#)**1** Image

## Overview

Quantity:	50 µg
Target:	ADAM21
Protein Characteristics:	AA 200-400
Origin:	Human
Source:	Escherichia coli (E. coli)
Protein Type:	Recombinant
Purification tag / Conjugate:	This ADAM21 protein is labelled with His tag.
Application:	ELISA, Western Blotting (WB)

## Product Details

Purity:	Greater than 95 % as determined by SDS-PAGE
Sterility:	0.2 µm filtered

## Target Details

Target:	ADAM21
Alternative Name:	ADAM21 ( <a href="#">ADAM21 Products</a> )
Background:	A disintegrin and metalloproteinase domain 21, ADA21_HUMAN, ADAM 21, ADAM metallopeptidase domain 21, ADAM metallopeptidase domain 21, preproprotein, Adam21, ADAM31, Disintegrin and metalloproteinase domain-containing protein 21
Molecular Weight:	22 kDa

## Target Details

---

UniProt: [Q9UKJ8](#)

## Application Details

---

Application Notes: Optimal working dilution should be determined by the investigator.

Restrictions: For Research Use only

## Handling

---

Format: Lyophilized

Reconstitution: Centrifuge the vial at 10,000 rpm for 1 minute, reconstitute at 200 µg/mL in sterile distilled water by gentle pipetting 2-3 times, don't vortex

Buffer: Lyophilized from a 0.2 µm filtered solution in 10 mM Hepes, 500 mM NaCl with 5 % trehalose, pH 7.4

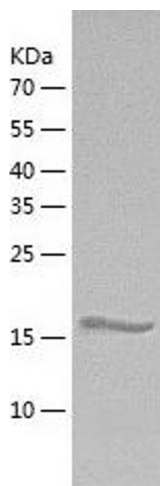
Storage: 4 °C, -20 °C

Storage Comment: -20°C for 12 months as lyophilized, 2-8°C for 1 month under sterile conditions after reconstitution

Expiry Date: 12 months

## Images

---



### Western Blotting

Image 1.