



[Go to Product page](#)

Datasheet for ABIN7121701

## AP3S1 Protein (AA 1-193) (His tag)

### 1 Image

#### Overview

Quantity:	50 µg
Target:	AP3S1
Protein Characteristics:	AA 1-193
Origin:	Human
Source:	Escherichia coli (E. coli)
Protein Type:	Recombinant
Purification tag / Conjugate:	This AP3S1 protein is labelled with His tag.
Application:	ELISA, Western Blotting (WB)

#### Product Details

Purity:	Greater than 95 % as determined by SDS-PAGE
Sterility:	0.2 µm filtered

#### Target Details

Target:	AP3S1
Alternative Name:	AP3S1 ( <a href="#">AP3S1 Products</a> )
Background:	Adapter-related protein complex 3 sigma-1 subunit, Adaptor-related protein complex 3, AP-3 complex sigma-3A subunit, AP-3 complex subunit sigma-1, AP-3 complex subunit sigma-3A, AP3S1, AP3S1_HUMAN, CLAPS3, Clathrin associated/assembly/adaptor protein small 3
Molecular Weight:	21.1 kDa

## Target Details

---

UniProt: [Q92572](#)

## Application Details

---

Application Notes: Optimal working dilution should be determined by the investigator.

Restrictions: For Research Use only

## Handling

---

Format: Lyophilized

Reconstitution: Centrifuge the vial at 10,000 rpm for 1 minute, reconstitute at 200 µg/mL in sterile distilled water by gentle pipetting 2-3 times, don't vortex

Buffer: Lyophilized from a 0.2 µm filtered solution in 10 mM Hepes, 500 mM NaCl with 5 % trehalose, pH 7.4

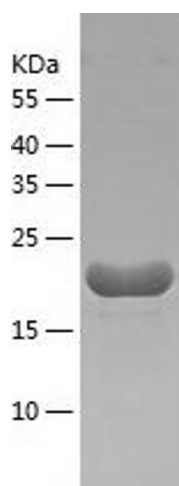
Storage: 4 °C, -20 °C

Storage Comment: -20°C for 12 months as lyophilized, 2-8°C for 1 month under sterile conditions after reconstitution

Expiry Date: 12 months

## Images

---



### Western Blotting

Image 1.