

Datasheet for ABIN7121769

ADH6 Protein (AA 1-375) (His tag)[Go to Product page](#)**1** Image

Overview

Quantity:	50 µg
Target:	ADH6
Protein Characteristics:	AA 1-375
Origin:	Human
Source:	Escherichia coli (E. coli)
Protein Type:	Recombinant
Purification tag / Conjugate:	This ADH6 protein is labelled with His tag.
Application:	ELISA, Western Blotting (WB)

Product Details

Purity:	Greater than 95 % as determined by SDS-PAGE
Sterility:	0.2 µm filtered

Target Details

Target:	ADH6
Alternative Name:	ADH6 (ADH6 Products)
Background:	ADH 5, ADH 6, Adh6, ADH6_HUMAN, Alcohol dehydrogenase 6, Alcohol dehydrogenase 6 (class V), Aldehyde reductase, Class V alcohol dehydrogenase 6, UDP GLUCURONOSYLTRANSFERASE 2B10 PRECURSOR, MICROSOMAL
Molecular Weight:	41.1 kDa

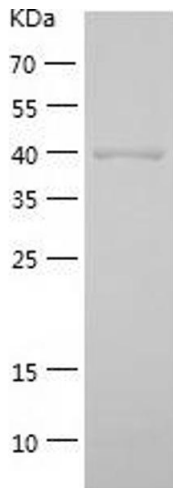
Application Details

Application Notes:	Optimal working dilution should be determined by the investigator.
Restrictions:	For Research Use only

Handling

Format:	Lyophilized
Reconstitution:	Centrifuge the vial at 10,000 rpm for 1 minute, reconstitute at 200 µg/mL in sterile distilled water by gentle pipetting 2-3 times, don't vortex
Buffer:	Lyophilized from a 0.2 µm filtered solution in 10 mM Hepes, 500 mM NaCl with 5 % trehalose, pH 7.4
Storage:	4 °C, -20 °C
Storage Comment:	-20°C for 12 months as lyophilized, 2-8°C for 1 month under sterile conditions after reconstitution
Expiry Date:	12 months

Images



Western Blotting

Image 1.