



[Go to Product page](#)

Datasheet for ABIN7121820

Abeta 1-42 Protein (AA 672-713) (His-IF2DI Tag)

1 Image

Overview

Quantity:	50 µg
Target:	Abeta 1-42
Protein Characteristics:	AA 672-713
Origin:	Human
Source:	Escherichia coli (E. coli)
Protein Type:	Recombinant
Purification tag / Conjugate:	This Abeta 1-42 protein is labelled with His-IF2DI Tag.
Application:	ELISA, Western Blotting (WB)

Product Details

Purity:	Greater than 95 % as determined by SDS-PAGE
Sterility:	0.2 µm filtered

Target Details

Target:	Abeta 1-42
Alternative Name:	beta Amyloid 1-42 (Abeta 1-42 Products)
Background:	A4, A4_HUMAN, AAA, ABETA, ABPP, AICD-50, AICD-57, AICD-59, AID(50), AID(57), AID(59), Alzheimer disease amyloid protein, Amyloid intracellular domain 50, Amyloid intracellular domain 57, Amyloid intracellular domain 59, APP, APPI, Beta amyloid protein 42, Beta APP42, AB42
Molecular Weight:	25 kDa

Target Details

UniProt: [P05067](#)

Application Details

Application Notes: Optimal working dilution should be determined by the investigator.

Restrictions: For Research Use only

Handling

Format: Lyophilized

Reconstitution: Centrifuge the vial at 10,000 rpm for 1 minute, reconstitute at 200 µg/mL in sterile distilled water by gentle pipetting 2-3 times, don't vortex

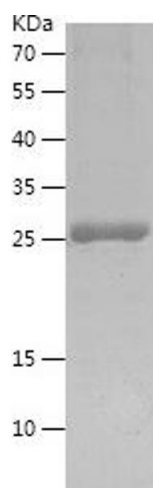
Buffer: Lyophilized from a 0.2 µm filtered solution in 10 mM Hepes, 500 mM NaCl with 5 % trehalose, pH 7.4

Storage: 4 °C, -20 °C

Storage Comment: -20°C for 12 months as lyophilized, 2-8°C for 1 month under sterile conditions after reconstitution

Expiry Date: 12 months

Images



Western Blotting

Image 1.