



[Go to Product page](#)

Datasheet for ABIN7121823

ANAPC15 Protein (AA 1-121) (His-IF2DI Tag)

1 Image

Overview

| | |
|-------------------------------|--|
| Quantity: | 50 µg |
| Target: | ANAPC15 |
| Protein Characteristics: | AA 1-121 |
| Origin: | Human |
| Source: | Escherichia coli (E. coli) |
| Protein Type: | Recombinant |
| Purification tag / Conjugate: | This ANAPC15 protein is labelled with His-IF2DI Tag. |
| Application: | ELISA, Western Blotting (WB) |

Product Details

| | |
|------------|--|
| Purity: | Greater than 95 % by SDS-PAGE gel analyses |
| Sterility: | 0.2 µm filtered |

Target Details

| | |
|-------------------|---|
| Target: | ANAPC15 |
| Alternative Name: | APC15 (ANAPC15 Products) |
| Background: | 600 kDa retinoblastoma protein associated factor antibody, 600 kDa retinoblastoma protein-associated factor antibody, E3 ubiquitin-protein ligase UBR4 antibody, KIAA0462 antibody, KIAA1307 antibody, N-recognin-4 antibody, p600 antibody, RBAF600 antibody |
| Molecular Weight: | 34.9 kDa |

Target Details

UniProt: [P60006](#)

Application Details

Application Notes: Optimal working dilution should be determined by the investigator.

Restrictions: For Research Use only

Handling

Format: Lyophilized

Reconstitution: Centrifuge the vial at 10,000 rpm for 1 minute, reconstitute at 200 µg/mL in sterile distilled water by gentle pipetting 2-3 times, don't vortex

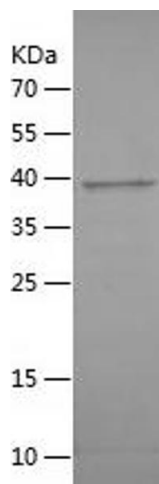
Buffer: Lyophilized from a 0.2 µm filtered solution in PBS with 5 % trehalose, pH 7.4

Storage: 4 °C, -20 °C

Storage Comment: -20°C for 12 months as lyophilized, 2-8°C for 1 month under sterile conditions after reconstitution

Expiry Date: 12 months

Images



Western Blotting

Image 1.