



[Go to Product page](#)

Datasheet for ABIN7121856

APH1A Protein (AA 230-265) (His-IF2DI Tag)

1 Image

Overview

Quantity:	50 µg
Target:	APH1A
Protein Characteristics:	AA 230-265
Origin:	Human
Source:	Escherichia coli (E. coli)
Protein Type:	Recombinant
Purification tag / Conjugate:	This APH1A protein is labelled with His-IF2DI Tag.
Application:	ELISA, Western Blotting (WB)

Product Details

Purity:	Greater than 95 % by SDS-PAGE gel analyses
Sterility:	0.2 µm filtered

Target Details

Target:	APH1A
Alternative Name:	APH1A (APH1A Products)
Background:	6530402N02Rik, anterior pharynx defective 1 homolog A (C. elegans), APH-1, APH1A, APH-1A, aph-1alpha, CGI-78, gamma-secretase subunit APH-1A, Presenilin-stabilization factor, PSF
Molecular Weight:	24.7 kDa
UniProt:	Q96B13

Target Details

Pathways: [Notch Signaling](#), [Neurotrophin Signaling Pathway](#)

Application Details

Application Notes: Optimal working dilution should be determined by the investigator.

Restrictions: For Research Use only

Handling

Format: Lyophilized

Reconstitution: Centrifuge the vial at 10,000 rpm for 1 minute, reconstitute at 200 µg/mL in sterile distilled water by gentle pipetting 2-3 times, don't vortex

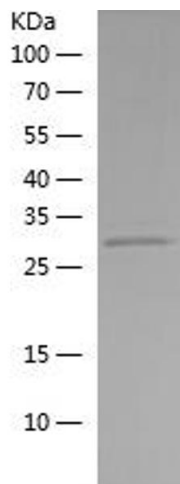
Buffer: Lyophilized from a 0.2 µm filtered solution in PBS with 5 % trehalose, pH 7.4

Storage: 4 °C, -20 °C

Storage Comment: -20°C for 12 months as lyophilized, 2-8°C for 1 month under sterile conditions after reconstitution

Expiry Date: 12 months

Images



Western Blotting

Image 1.