

Datasheet for ABIN7121906

ASH1L Protein (AA 2433-2548) (His tag)[Go to Product page](#)**1** Image

Overview

Quantity:	50 µg
Target:	ASH1L
Protein Characteristics:	AA 2433-2548
Origin:	Human
Source:	Escherichia coli (E. coli)
Protein Type:	Recombinant
Purification tag / Conjugate:	This ASH1L protein is labelled with His tag.
Application:	ELISA, Western Blotting (WB)

Product Details

Purity:	Greater than 95 % as determined by SDS-PAGE
Sterility:	0.2 µm filtered

Target Details

Target:	ASH1L
Alternative Name:	ASH1L (ASH1L Products)
Background:	Absent small and homeotic disks protein 1 homolog, Absent Small or Homeotic Like, ASH 1, ASH 1L, ash1 (absent small or homeotic 1), Ash1 (absent small or homeotic) like, ASH1-like protein, ASH1L, ASH1L_HUMAN, ASH1L1, FLJ10504, huASH1, KIAA1420
Molecular Weight:	12.7 kDa

Target Details

UniProt: [Q9NR48](#)

Application Details

Application Notes: Optimal working dilution should be determined by the investigator.

Restrictions: For Research Use only

Handling

Format: Lyophilized

Reconstitution: Centrifuge the vial at 10,000 rpm for 1 minute, reconstitute at 200 µg/mL in sterile distilled water by gentle pipetting 2-3 times, don't vortex

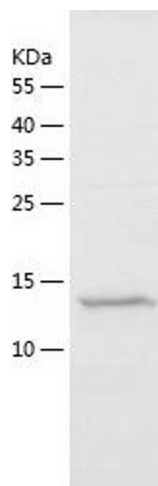
Buffer: Lyophilized from a 0.2 µm filtered solution in 10 mM Hepes, 500 mM NaCl with 5 % trehalose, pH 7.4

Storage: 4 °C, -20 °C

Storage Comment: -20°C for 12 months as lyophilized, 2-8°C for 1 month under sterile conditions after reconstitution

Expiry Date: 12 months

Images



Western Blotting

Image 1.