



[Go to Product page](#)

Datasheet for ABIN7121921

ATG5 Protein (AA 138-275) (His-IF2DI Tag)

1 Image

Overview

Quantity:	50 µg
Target:	ATG5
Protein Characteristics:	AA 138-275
Origin:	Human
Source:	Escherichia coli (E. coli)
Protein Type:	Recombinant
Purification tag / Conjugate:	This ATG5 protein is labelled with His-IF2DI Tag.
Application:	ELISA, Western Blotting (WB)

Product Details

Purity:	Greater than 95 % by SDS-PAGE gel analyses
Sterility:	0.2 µm filtered

Target Details

Target:	ATG5
Alternative Name:	ATG5 (ATG5 Products)
Background:	APG5 autophagy 5-like (S. cerevisiae), APG5, APG5LS. cerevisiae)-like, ASP, ASPAPG5-LIKE, ATG5 autophagy related 5 homolog (S. cerevisiae), ATG5, Autophagy protein 5
Molecular Weight:	36.9 kDa
UniProt:	Q9H1Y0

Target Details

Pathways: [Activation of Innate immune Response](#), [Production of Molecular Mediator of Immune Response](#), [Autophagy](#)

Application Details

Application Notes: Optimal working dilution should be determined by the investigator.

Restrictions: For Research Use only

Handling

Format: Lyophilized

Reconstitution: Centrifuge the vial at 10,000 rpm for 1 minute, reconstitute at 200 µg/mL in sterile distilled water by gentle pipetting 2-3 times, don't vortex

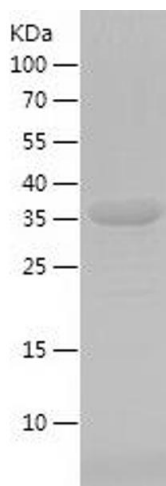
Buffer: Lyophilized from a 0.2 µm filtered solution in PBS with 5 % trehalose, pH 7.4

Storage: 4 °C, -20 °C

Storage Comment: -20°C for 12 months as lyophilized, 2-8°C for 1 month under sterile conditions after reconstitution

Expiry Date: 12 months

Images



Western Blotting

Image 1.