

Datasheet for ABIN7121924

**ACLY Protein (AA 4-265) (His tag)**[Go to Product page](#)**1** Image

## Overview

Quantity:	50 µg
Target:	ACLY
Protein Characteristics:	AA 4-265
Origin:	Human
Source:	Escherichia coli (E. coli)
Protein Type:	Recombinant
Purification tag / Conjugate:	This ACLY protein is labelled with His tag.
Application:	ELISA, Western Blotting (WB)

## Product Details

Purity:	Greater than 95 % as determined by SDS-PAGE
Sterility:	0.2 µm filtered

## Target Details

Target:	ACLY
Alternative Name:	ATP citrate lyase ( <a href="#">ACLY Products</a> )
Background:	ACL, Acly, ACLY_HUMAN, ATP citrate (pro-S) lyase, ATP citrate lyase, ATP citrate synthase, ATP-citrate (pro-S)-lyase, ATP-citrate synthase, ATPcitrate synthase, ATPCL, Citrate cleavage enzyme, CLATP, OTTHUMP00000164773
Molecular Weight:	28.7 kDa

## Target Details

UniProt: [P53396](#)

Pathways: [Warburg Effect](#)

## Application Details

Application Notes: Optimal working dilution should be determined by the investigator.

Restrictions: For Research Use only

## Handling

Format: Lyophilized

Reconstitution: Centrifuge the vial at 10,000 rpm for 1 minute, reconstitute at 200 µg/mL in sterile distilled water by gentle pipetting 2-3 times, don't vortex

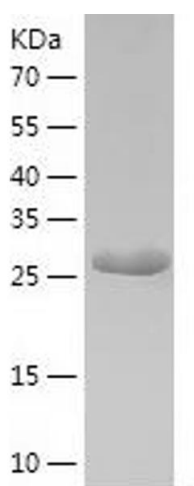
Buffer: Lyophilized from a 0.2 µm filtered solution in 10 mM Hepes, 500 mM NaCl with 5 % trehalose, pH 7.4

Storage: 4 °C, -20 °C

Storage Comment: -20°C for 12 months as lyophilized, 2-8°C for 1 month under sterile conditions after reconstitution

Expiry Date: 12 months

## Images



### Western Blotting

Image 1.