



[Go to Product page](#)

Datasheet for ABIN7121953

## ATG4C Protein (AA 1-458) (His tag)

### 1 Image

#### Overview

Quantity:	50 µg
Target:	ATG4C
Protein Characteristics:	AA 1-458
Origin:	Human
Source:	Escherichia coli (E. coli)
Protein Type:	Recombinant
Purification tag / Conjugate:	This ATG4C protein is labelled with His tag.
Application:	ELISA, Western Blotting (WB)

#### Product Details

Purity:	Greater than 95 % as determined by SDS-PAGE
Sterility:	0.2 µm filtered

#### Target Details

Target:	ATG4C
Alternative Name:	ATG4C ( <a href="#">ATG4C Products</a> )
Background:	APG4 autophagy 4 homolog C, APG4 autophagy 4 homolog C (S. cerevisiae), APG4 C, APG4-C, APG4C, ATG 4C, ATG4 autophagy related 4 homolog C, ATG4 autophagy related 4 homolog C (S. cerevisiae), Atg4c, ATG4C_HUMAN, AUT (S. cerevisiae) like 1, cysteine endopeptidase
Molecular Weight:	50.3 kDa

## Target Details

UniProt: [Q96DT6](#)

Pathways: [Autophagy](#)

## Application Details

Application Notes: Optimal working dilution should be determined by the investigator.

Restrictions: For Research Use only

## Handling

Format: Lyophilized

Reconstitution: Centrifuge the vial at 10,000 rpm for 1 minute, reconstitute at 200 µg/mL in sterile distilled water by gentle pipetting 2-3 times, don't vortex

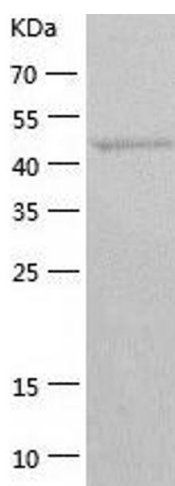
Buffer: Lyophilized from a 0.2 µm filtered solution in 10 mM Hepes, 500 mM NaCl with 5 % trehalose, pH 7.4

Storage: 4 °C, -20 °C

Storage Comment: -20°C for 12 months as lyophilized, 2-8°C for 1 month under sterile conditions after reconstitution

Expiry Date: 12 months

## Images



### Western Blotting

Image 1.