



[Go to Product page](#)

Datasheet for ABIN7121976

BATF Protein (AA 1-125) (His tag)

1 Image

Overview

Quantity:	50 µg
Target:	BATF
Protein Characteristics:	AA 1-125
Origin:	Human
Source:	Escherichia coli (E. coli)
Protein Type:	Recombinant
Purification tag / Conjugate:	This BATF protein is labelled with His tag.
Application:	ELISA, Western Blotting (WB)

Product Details

Purity:	Greater than 95 % as determined by SDS-PAGE
Sterility:	0.2 µm filtered

Target Details

Target:	BATF
Alternative Name:	BATF (BATF Products)
Background:	Activating transcription factor B, B ATF, B-ATF, B-cell-activating transcription factor, Basic leucine zipper transcription factor like, Basic leucine zipper transcriptional factor ATF like, Basic leucine zipper transcriptional factor ATF-like, Batf, BATF_HUMAN, BATF1
Molecular Weight:	13.6 kDa

Target Details

UniProt: [Q16520](#)

Application Details

Application Notes: Optimal working dilution should be determined by the investigator.

Restrictions: For Research Use only

Handling

Format: Lyophilized

Reconstitution: Centrifuge the vial at 10,000 rpm for 1 minute, reconstitute at 200 µg/mL in sterile distilled water by gentle pipetting 2-3 times, don't vortex

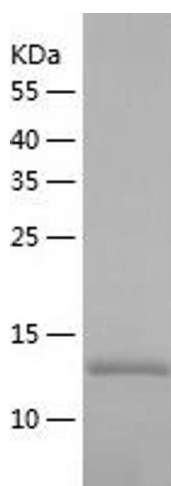
Buffer: Lyophilized from a 0.2 µm filtered solution in 10 mM Hepes, 500 mM NaCl with 5 % trehalose, pH 7.4

Storage: 4 °C, -20 °C

Storage Comment: -20°C for 12 months as lyophilized, 2-8°C for 1 month under sterile conditions after reconstitution

Expiry Date: 12 months

Images



Western Blotting

Image 1.