



[Go to Product page](#)

Datasheet for ABIN7122029

BCKDHA Protein (AA 46-445) (His tag)

1 Image

Overview

Quantity:	50 µg
Target:	BCKDHA
Protein Characteristics:	AA 46-445
Origin:	Human
Source:	Escherichia coli (E. coli)
Protein Type:	Recombinant
Purification tag / Conjugate:	This BCKDHA protein is labelled with His tag.
Application:	ELISA, Western Blotting (WB)

Product Details

Purity:	Greater than 95 % as determined by SDS-PAGE
Sterility:	0.2 µm filtered

Target Details

Target:	BCKDHA
Alternative Name:	BCKDHA (BCKDHA Products)
Background:	Branched chain alpha keto acid dehydrogenase E1 component alpha polypeptide, FLJ45695, OVD1A, 2 oxoisovalerate dehydrogenase (lipoamide), 2 oxoisovalerate dehydrogenase subunit alpha, mitochondrial, 2-oxoisovalerate dehydrogenase subunit alpha, mitochondrial, BCKDE1A
Molecular Weight:	43.9 kDa

Target Details

UniProt: [P12694](#)

Application Details

Application Notes: Optimal working dilution should be determined by the investigator.

Restrictions: For Research Use only

Handling

Format: Lyophilized

Reconstitution: Centrifuge the vial at 10,000 rpm for 1 minute, reconstitute at 200 µg/mL in sterile distilled water by gentle pipetting 2-3 times, don't vortex

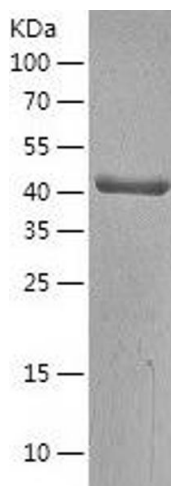
Buffer: Lyophilized from a 0.2 µm filtered solution in 10 mM Hepes, 500 mM NaCl with 5 % trehalose, pH 7.4

Storage: 4 °C, -20 °C

Storage Comment: -20°C for 12 months as lyophilized, 2-8°C for 1 month under sterile conditions after reconstitution

Expiry Date: 12 months

Images



Western Blotting

Image 1.