



[Go to Product page](#)

Datasheet for ABIN7122056

BUD31 Protein (AA 1-144) (His tag)

1 Image

Overview

Quantity:	50 µg
Target:	BUD31
Protein Characteristics:	AA 1-144
Origin:	Human
Source:	Escherichia coli (E. coli)
Protein Type:	Recombinant
Purification tag / Conjugate:	This BUD31 protein is labelled with His tag.
Application:	ELISA, Western Blotting (WB)

Product Details

Purity:	Greater than 95 % as determined by SDS-PAGE
Sterility:	0.2 µm filtered

Target Details

Target:	BUD31
Alternative Name:	BUD31 (BUD31 Products)
Background:	Bud31, BUD31 homolog (S. cerevisiae), BUD31_HUMAN, Cwc14, EDG 2, EDG2, fSAP17, Functional spliceosome associated protein 17, G10, G10 maternal transcript homolog, Maternal G10 transcript, Protein BUD31 homolog, Protein EDG-2, Protein G10 homolog, YCR063W
Molecular Weight:	15.7 kDa

Target Details

UniProt: [P41223](#)

Application Details

Application Notes: Optimal working dilution should be determined by the investigator.

Restrictions: For Research Use only

Handling

Format: Lyophilized

Reconstitution: Centrifuge the vial at 10,000 rpm for 1 minute, reconstitute at 200 µg/mL in sterile distilled water by gentle pipetting 2-3 times, don't vortex

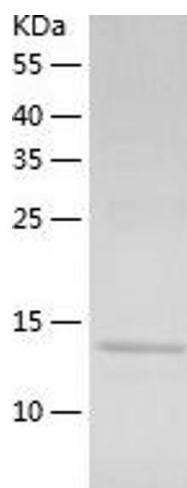
Buffer: Lyophilized from a 0.2 µm filtered solution in 10 mM Hepes, 500 mM NaCl with 5 % trehalose, pH 7.4

Storage: 4 °C, -20 °C

Storage Comment: -20°C for 12 months as lyophilized, 2-8°C for 1 month under sterile conditions after reconstitution

Expiry Date: 12 months

Images



Western Blotting

Image 1.