

Datasheet for ABIN7122060

CLEC11A Protein (AA 22-293) (His-IF2DI Tag)[Go to Product page](#)**1** Image

Overview

Quantity:	50 µg
Target:	CLEC11A
Protein Characteristics:	AA 22-293
Origin:	Human
Source:	Escherichia coli (E. coli)
Protein Type:	Recombinant
Purification tag / Conjugate:	This CLEC11A protein is labelled with His-IF2DI Tag.
Application:	Western Blotting (WB), ELISA

Product Details

Purity:	Greater than 90 % by SDS-PAGE gel analyses
Sterility:	0.2 µm filtered

Target Details

Target:	CLEC11A
Alternative Name:	CLEC11A (CLEC11A Products)
Background:	C type (calcium dependent, carbohydrate recognition domain) lectin, superfamily member 3, C type lectin domain family 11 member A, C type lectin superfamily member 3, C-type lectin domain family 11 member A, C-type lectin superfamily member 3, CLC11_HUMAN, CLEC11A, CLECSF3
Molecular Weight:	50.6 kDa

Target Details

UniProt: [Q9Y240](#)

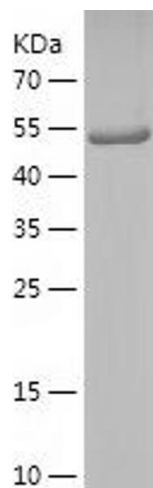
Application Details

Application Notes:	Optimal working dilution should be determined by the investigator.
Restrictions:	For Research Use only

Handling

Format:	Lyophilized
Reconstitution:	Centrifuge the vial at 10,000 rpm for 1 minute, reconstitute at 200 µg/mL in sterile distilled water by gentle pipetting 2-3 times, don't vortex
Buffer:	Lyophilized from a 0.2 µm filtered solution in PBS with 5 % trehalose, pH 7.4
Storage:	4 °C,-20 °C
Storage Comment:	-20°C for 12 months as lyophilized, 2-8°C for 1 month under sterile conditions after reconstitution
Expiry Date:	12 months

Images



Western Blotting

Image 1.