



[Go to Product page](#)

Datasheet for ABIN7122062

CLEC14A Protein (AA 22-398) (His tag)

1 Image

Overview

Quantity:	50 µg
Target:	CLEC14A
Protein Characteristics:	AA 22-398
Origin:	Human
Source:	Escherichia coli (E. coli)
Protein Type:	Recombinant
Purification tag / Conjugate:	This CLEC14A protein is labelled with His tag.
Application:	ELISA, Western Blotting (WB)

Product Details

Purity:	Greater than 95 % as determined by SDS-PAGE
Sterility:	0.2 µm filtered

Target Details

Target:	CLEC14A
Alternative Name:	CLEC14A (CLEC14A Products)
Background:	C type lectin domain family 14, member A, C-type lectin domain family 14 member A, C14orf27, CEG1, CLC14_HUMAN, Clec14a, CLECT and EGF like domain containing protein, EGFR-5, EGFR5, Epidermal growth factor receptor 5
Molecular Weight:	41.4 kDa

Target Details

UniProt: [Q86T13](#)

Application Details

Application Notes: Optimal working dilution should be determined by the investigator.

Restrictions: For Research Use only

Handling

Format: Lyophilized

Reconstitution: Centrifuge the vial at 10,000 rpm for 1 minute, reconstitute at 200 µg/mL in sterile distilled water by gentle pipetting 2-3 times, don't vortex

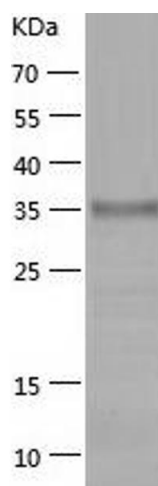
Buffer: Lyophilized from a 0.2 µm filtered solution in 10 mM Hepes, 500 mM NaCl with 5 % trehalose, pH 7.4

Storage: 4 °C, -20 °C

Storage Comment: -20°C for 12 months as lyophilized, 2-8°C for 1 month under sterile conditions after reconstitution

Expiry Date: 12 months

Images



Western Blotting

Image 1.