

Datasheet for ABIN7122063

**CLEC4A Protein (AA 70-238) (His tag)**[Go to Product page](#)**1** Image

## Overview

Quantity:	50 µg
Target:	CLEC4A
Protein Characteristics:	AA 70-238
Origin:	Mouse
Source:	Escherichia coli (E. coli)
Protein Type:	Recombinant
Purification tag / Conjugate:	This CLEC4A protein is labelled with His tag.
Application:	Western Blotting (WB), ELISA

## Product Details

Purity:	Greater than 95 % as determined by SDS-PAGE
Sterility:	0.2 µm filtered

## Target Details

Target:	CLEC4A
Alternative Name:	CLECSF6 ( <a href="#">CLEC4A Products</a> )
Background:	C type (calcium dependent carbohydrate recognition domain) lectin superfamily member 6, C type lectin, C type lectin DDB27, C type lectin superfamily 6, C-type (calcium dependent, carbohydrate-recognition domain) lectin, superfamily member 6, C-type lectin superfamily member 6, C-type lectin DDB27
Molecular Weight:	18.5 kDa

## Target Details

UniProt: [Q9QZ15](#)

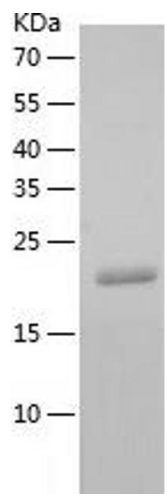
## Application Details

Application Notes:	Optimal working dilution should be determined by the investigator.
Restrictions:	For Research Use only

## Handling

Format:	Lyophilized
Reconstitution:	Centrifuge the vial at 10,000 rpm for 1 minute, reconstitute at 200 µg/mL in sterile distilled water by gentle pipetting 2-3 times, don't vortex
Buffer:	Lyophilized from a 0.2 µm filtered solution in 10 mM Hepes, 500 mM NaCl with 5 % trehalose, pH 7.4
Storage:	4 °C,-20 °C
Storage Comment:	-20°C for 12 months as lyophilized, 2-8°C for 1 month under sterile conditions after reconstitution
Expiry Date:	12 months

## Images



### Western Blotting

Image 1.