

Datasheet for ABIN7122064

CLEC9A Protein (AA 100-209) (His tag)[Go to Product page](#)**1** Image

Overview

Quantity:	50 µg
Target:	CLEC9A
Protein Characteristics:	AA 100-209
Origin:	Human
Source:	Escherichia coli (E. coli)
Protein Type:	Recombinant
Purification tag / Conjugate:	This CLEC9A protein is labelled with His tag.
Application:	ELISA, Western Blotting (WB)

Product Details

Purity:	Greater than 95 % by SDS-PAGE gel analyses
Sterility:	0.2 µm filtered

Target Details

Target:	CLEC9A
Alternative Name:	CD370 (CLEC9A Products)
Background:	C type lectin domain family 9, member A, C-type lectin domain family 9 member A, CLC9A_HUMAN, CLEC9A, DNGR1, HEEE9341, PRO34046, UNQ9341
Molecular Weight:	14.3 kDa
UniProt:	Q6UXN8

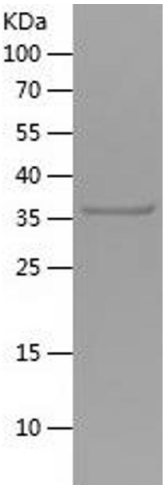
Application Details

Application Notes:	Optimal working dilution should be determined by the investigator.
Restrictions:	For Research Use only

Handling

Format:	Lyophilized
Reconstitution:	Centrifuge the vial at 10,000 rpm for 1 minute, reconstitute at 200 µg/mL in sterile distilled water by gentle pipetting 2-3 times, don't vortex
Buffer:	Lyophilized from a 0.2 µm filtered solution in PBS with 5 % trehalose, pH 7.4
Storage:	4 °C,-20 °C
Storage Comment:	-20°C for 12 months as lyophilized, 2-8°C for 1 month under sterile conditions after reconstitution
Expiry Date:	12 months

Images



Western Blotting

Image 1.