



[Go to Product page](#)

Datasheet for ABIN7122082

CGRP Protein (AA 83-118) (His-IF2DI Tag)

1 Image

Overview

Quantity:	50 µg
Target:	CGRP (CALCA)
Protein Characteristics:	AA 83-118
Origin:	Human
Source:	Escherichia coli (E. coli)
Protein Type:	Recombinant
Purification tag / Conjugate:	This CGRP protein is labelled with His-IF2DI Tag.
Application:	Western Blotting (WB), ELISA

Product Details

Purity:	Greater than 90 % as determined by SDS-PAGE
Sterility:	0.2 µm filtered

Target Details

Target:	CGRP (CALCA)
Alternative Name:	CGRP (CALCA Products)
Background:	Calcitonin/calcitonin related polypeptide alpha, Alpha type CGRP, Beta type CGRP, CALC1, CALC2, CALCA, CALCB, Calcitonin 1, Calcitonin 2, Calcitonin gene related peptide I, Calcitonin gene related peptide II, Calcitonin related polypeptide alpha, Calcitonin related polypeptide beta
Molecular Weight:	24.3 kDa

Target Details

UniProt: [P06881](#)

Pathways: [Hormone Activity](#), [cAMP Metabolic Process](#), [Myometrial Relaxation and Contraction](#), [Regulation of G-Protein Coupled Receptor Protein Signaling](#), [Skeletal Muscle Fiber Development](#), [Feeding Behaviour](#)

Application Details

Application Notes: Optimal working dilution should be determined by the investigator.

Restrictions: For Research Use only

Handling

Format: Lyophilized

Reconstitution: Centrifuge the vial at 10,000 rpm for 1 minute, reconstitute at 200 µg/mL in sterile distilled water by gentle pipetting 2-3 times, don't vortex

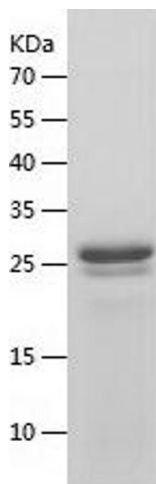
Buffer: Lyophilized from a 0.2 µm filtered solution in 10 mM Hepes, 500 mM NaCl with 5 % trehalose, pH 7.4

Storage: 4 °C, -20 °C

Storage Comment: -20°C for 12 months as lyophilized, 2-8°C for 1 month under sterile conditions after reconstitution

Expiry Date: 12 months

Images



Western Blotting

Image 1.