

Datasheet for ABIN7122124
CAD Protein (AA 1648-1879) (His-IF2DI Tag)



[Go to Product page](#)

1 Image

Overview

Quantity:	50 µg
Target:	CAD
Protein Characteristics:	AA 1648-1879
Origin:	Human
Source:	Escherichia coli (E. coli)
Protein Type:	Recombinant
Purification tag / Conjugate:	This CAD protein is labelled with His-IF2DI Tag.
Application:	ELISA, Western Blotting (WB)

Product Details

Purity:	Greater than 95 % by SDS-PAGE gel analyses
Sterility:	0.2 µm filtered

Target Details

Target:	CAD
Alternative Name:	CAD (CAD Products)
Background:	CAD, CALD1, Caldesmon, caldesmon 1, CDM, H CAD, L CAD, NAG22
Molecular Weight:	46.5 kDa
UniProt:	P27708
Pathways:	Production of Molecular Mediator of Immune Response , Ribonucleoside Biosynthetic Process

Application Details

Application Notes: Optimal working dilution should be determined by the investigator.

Restrictions: For Research Use only

Handling

Format: Lyophilized

Reconstitution: Centrifuge the vial at 10,000 rpm for 1 minute, reconstitute at 200 µg/mL in sterile distilled water by gentle pipetting 2-3 times, don't vortex

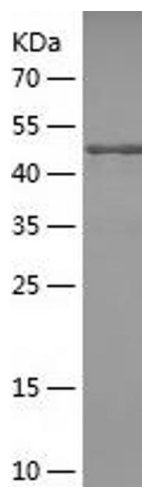
Buffer: Lyophilized from a 0.2 µm filtered solution in PBS with 5 % trehalose, pH 7.4

Storage: 4 °C, -20 °C

Storage Comment: -20°C for 12 months as lyophilized, 2-8°C for 1 month under sterile conditions after reconstitution

Expiry Date: 12 months

Images



Western Blotting

Image 1.