

Datasheet for ABIN7122172

CARD14 Protein (AA 2-434) (His tag)[Go to Product page](#)**1** Image

Overview

Quantity:	50 µg
Target:	CARD14
Protein Characteristics:	AA 2-434
Origin:	Human
Source:	Escherichia coli (E. coli)
Protein Type:	Recombinant
Purification tag / Conjugate:	This CARD14 protein is labelled with His tag.
Application:	ELISA, Western Blotting (WB)

Product Details

Purity:	Greater than 95 % as determined by SDS-PAGE
Sterility:	0.2 µm filtered

Target Details

Target:	CARD14
Alternative Name:	CARD14 (CARD14 Products)
Background:	Bcl10 interacting MAGUK protein 2, Bimp 2, Bimp2, CAR14_HUMAN, CARD 14, CARD containing MAGUK 2 protein, CARD containing MAGUK protein 2, Card maguk protein 2, CARD-containing MAGUK protein 2, CARD14, Carma 2, Carma2, Caspase recruitment domain containing protein 14
Molecular Weight:	47.5 kDa

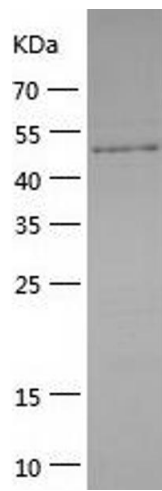
Application Details

Application Notes:	Optimal working dilution should be determined by the investigator.
Restrictions:	For Research Use only

Handling

Format:	Lyophilized
Reconstitution:	Centrifuge the vial at 10,000 rpm for 1 minute, reconstitute at 200 µg/mL in sterile distilled water by gentle pipetting 2-3 times, don't vortex
Buffer:	Lyophilized from a 0.2 µm filtered solution in 10 mM Hepes, 500 mM NaCl with 5 % trehalose, pH 7.4
Storage:	4 °C, -20 °C
Storage Comment:	-20°C for 12 months as lyophilized, 2-8°C for 1 month under sterile conditions after reconstitution
Expiry Date:	12 months

Images



Western Blotting

Image 1.