



[Go to Product page](#)

Datasheet for ABIN7122173

CARD17 Protein (AA 1-110) (His tag)

1 Image

Overview

Quantity:	50 µg
Target:	CARD17
Protein Characteristics:	AA 1-110
Origin:	Human
Source:	Escherichia coli (E. coli)
Protein Type:	Recombinant
Purification tag / Conjugate:	This CARD17 protein is labelled with His tag.
Application:	ELISA, Western Blotting (WB)

Product Details

Purity:	Greater than 95 % as determined by SDS-PAGE
Sterility:	0.2 µm filtered

Target Details

Target:	CARD17
Alternative Name:	INCA (CARD17 Products)
Background:	CARD17_HUMAN, CARD 17, CARD17, Caspase 1 inhibitor, Caspase recruitment domain containing protein 17, Caspase recruitment domain-containing protein 17, Caspase-1 inhibitor INCA, Caspase1 inhibitor, Inhibitory caspase recruitment domain (CARD) protein, Inhibitory caspase recruitment domain protein
Molecular Weight:	12 kDa

Target Details

UniProt: [Q5XLA6](#)

Application Details

Application Notes: Optimal working dilution should be determined by the investigator.

Restrictions: For Research Use only

Handling

Format: Lyophilized

Reconstitution: Centrifuge the vial at 10,000 rpm for 1 minute, reconstitute at 200 µg/mL in sterile distilled water by gentle pipetting 2-3 times, don't vortex

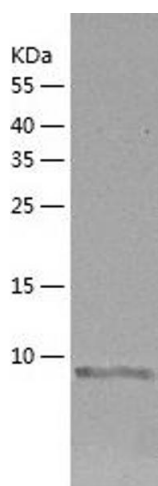
Buffer: Lyophilized from a 0.2 µm filtered solution in 10 mM Hepes, 500 mM NaCl with 5 % trehalose, pH 7.4

Storage: 4 °C, -20 °C

Storage Comment: -20°C for 12 months as lyophilized, 2-8°C for 1 month under sterile conditions after reconstitution

Expiry Date: 12 months

Images



Western Blotting

Image 1.