

Datasheet for ABIN7122221

**CKS1 Protein (AA 1-79) (His tag)**[Go to Product page](#)**1** Image

## Overview

Quantity:	50 µg
Target:	CKS1 (CKS1B)
Protein Characteristics:	AA 1-79
Origin:	Human
Source:	Escherichia coli (E. coli)
Protein Type:	Recombinant
Purification tag / Conjugate:	This CKS1 protein is labelled with His tag.
Application:	ELISA, Western Blotting (WB)

## Product Details

Purity:	Greater than 95 % as determined by SDS-PAGE
Sterility:	0.2 µm filtered

## Target Details

Target:	CKS1 (CKS1B)
Alternative Name:	CKS1 ( <a href="#">CKS1B Products</a> )
Background:	CDC2 associated protein CKS1, CDC28 protein kinase 1, CDC28 protein kinase 1B, CDC28 protein kinase regulatory subunit 1B, Cell division control protein CKS1, CKS 1, CKS-1, CKS1, CKS1_HUMAN, Cks1b, Ckshs1, Cyclin dependent kinases regulatory subunit 1
Molecular Weight:	8.6 kDa

## Target Details

UniProt: [P61024](#)

Pathways: [Mitotic G1-G1/S Phases, Inositol Metabolic Process](#)

## Application Details

Application Notes: Optimal working dilution should be determined by the investigator.

Restrictions: For Research Use only

## Handling

Format: Lyophilized

Reconstitution: Centrifuge the vial at 10,000 rpm for 1 minute, reconstitute at 200 µg/mL in sterile distilled water by gentle pipetting 2-3 times, don't vortex

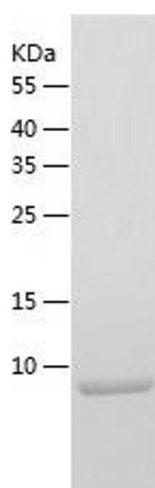
Buffer: Lyophilized from a 0.2 µm filtered solution in 10 mM Hepes, 500 mM NaCl with 5 % trehalose, pH 7.4

Storage: 4 °C, -20 °C

Storage Comment: -20°C for 12 months as lyophilized, 2-8°C for 1 month under sterile conditions after reconstitution

Expiry Date: 12 months

## Images



### Western Blotting

Image 1.