

### CIDEC Protein (AA 2-238) (His tag)



## 1 Image

## Overview

Quantity:	50 µg
Target:	CIDECD
Protein Characteristics:	AA 2-238
Origin:	Human
Source:	Escherichia coli (E. coli)
Protein Type:	Recombinant
Purification tag / Conjugate:	This CIDECD protein is labelled with His tag.
Application:	Western Blotting (WB), ELISA

## Product Details

Purity:	Greater than 95 % as determined by SDS-PAGE
Sterility:	0.2 µm filtered

### Target Details

Target:	CIDE C
Alternative Name:	FSP27 ( <a href="#">CIDE C Products</a> )
Background:	Cell death activator, Cell death activator CIDE-3, Cell death inducing DFFA like effector C, Cell death inducing DFFA like effector protein C, Cell death-inducing DFFA-like effector protein C, CIDE 3, CIDE C, CIDE3, CIDE C, CIDE3, CIDE C, CIDE3, CIDE C, CIDE3, CIDE C, Fat specific protein 27
Molecular Weight:	26 kDa

## Target Details

UniProt: [Q96AQ7](#)

## Application Details

Application Notes: Optimal working dilution should be determined by the investigator.

Restrictions: For Research Use only

## Handling

Format: Lyophilized

Reconstitution: Centrifuge the vial at 10,000 rpm for 1 minute, reconstitute at 200 µg/mL in sterile distilled water by gentle pipetting 2-3 times, don't vortex

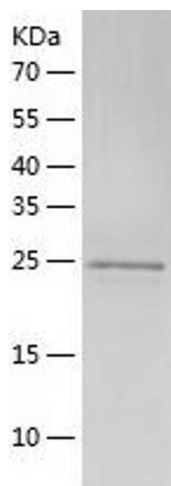
Buffer: Lyophilized from a 0.2 µm filtered solution in 10 mM Hepes, 500 mM NaCl with 5 % trehalose, pH 7.4

Storage: 4 °C, -20 °C

Storage Comment: -20°C for 12 months as lyophilized, 2-8°C for 1 month under sterile conditions after reconstitution

Expiry Date: 12 months

## Images



### Western Blotting

Image 1.