



[Go to Product page](#)

Datasheet for ABIN7122228

CDC26 Protein (AA 1-85) (His tag)

1 Image

Overview

Quantity:	50 µg
Target:	CDC26
Protein Characteristics:	AA 1-85
Origin:	Human
Source:	Escherichia coli (E. coli)
Protein Type:	Recombinant
Purification tag / Conjugate:	This CDC26 protein is labelled with His tag.
Application:	ELISA, Western Blotting (WB)

Product Details

Purity:	Greater than 95 % as determined by SDS-PAGE
Sterility:	0.2 µm filtered

Target Details

Target:	CDC26
Alternative Name:	Cdc26 (CDC26 Products)
Background:	ANAPC12, Anaphase promoting complex subunit 12, Anaphase promoting complex subunit CDC26, APC12, BWK 2, C9orf17, Cdc26, CDC26 subunit of anaphase promoting complex, Cell division cycle 26, Cell division cycle 26 homolog (S. cerevisiae), Cell division cycle protein 26 homolog
Molecular Weight:	9.2 kDa

Target Details

UniProt: [Q8NHZ8](#)

Application Details

Application Notes: Optimal working dilution should be determined by the investigator.

Restrictions: For Research Use only

Handling

Format: Lyophilized

Reconstitution: Centrifuge the vial at 10,000 rpm for 1 minute, reconstitute at 200 µg/mL in sterile distilled water by gentle pipetting 2-3 times, don't vortex

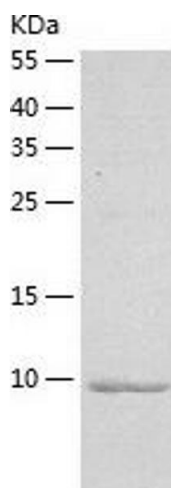
Buffer: Lyophilized from a 0.2 µm filtered solution in 10 mM Hepes, 500 mM NaCl with 5 % trehalose, pH 7.4

Storage: 4 °C, -20 °C

Storage Comment: -20°C for 12 months as lyophilized, 2-8°C for 1 month under sterile conditions after reconstitution

Expiry Date: 12 months

Images



Western Blotting

Image 1.