



[Go to Product page](#)

Datasheet for ABIN7122242

## CEP350 Protein (AA 1-200) (His-IF2DI Tag)

### 1 Image

#### Overview

Quantity:	50 µg
Target:	CEP350
Protein Characteristics:	AA 1-200
Origin:	Human
Source:	Escherichia coli (E. coli)
Protein Type:	Recombinant
Purification tag / Conjugate:	This CEP350 protein is labelled with His-IF2DI Tag.
Application:	ELISA, Western Blotting (WB)

#### Product Details

Purity:	Greater than 95 % by SDS-PAGE gel analyses
Sterility:	0.2 µm filtered

#### Target Details

Target:	CEP350
Alternative Name:	CEP350 ( <a href="#">CEP350 Products</a> )
Background:	Centrosome-associated protein of 350 kDa, CAP350, KIAA0480, GM133
Molecular Weight:	43.22 kDa
UniProt:	<a href="#">Q5VT06</a>
Pathways:	<a href="#">SARS-CoV-2 Protein Interactome</a>

## Application Details

---

Application Notes: Optimal working dilution should be determined by the investigator.

---

Restrictions: For Research Use only

---

## Handling

---

Format: Lyophilized

---

Reconstitution: Centrifuge the vial at 10,000 rpm for 1 minute, reconstitute at 200 µg/mL in sterile distilled water by gentle pipetting 2-3 times, don't vortex

---

Buffer: Lyophilized from a 0.2 µm filtered solution in PBS with 5 % trehalose, pH 7.4

---

Storage: 4 °C, -20 °C

---

Storage Comment: -20°C for 12 months as lyophilized, 2-8°C for 1 month under sterile conditions after reconstitution

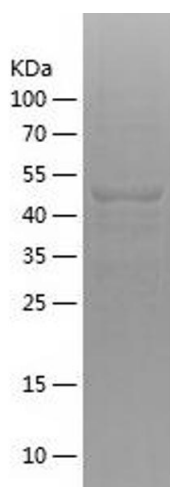
---

Expiry Date: 12 months

---

## Images

---



### Western Blotting

Image 1.