



[Go to Product page](#)

Datasheet for ABIN7122246

## CCM2 Protein (AA 66-353) (His tag)

### 1 Image

#### Overview

Quantity:	50 µg
Target:	CCM2
Protein Characteristics:	AA 66-353
Origin:	Human
Source:	Escherichia coli (E. coli)
Protein Type:	Recombinant
Purification tag / Conjugate:	This CCM2 protein is labelled with His tag.
Application:	ELISA, Western Blotting (WB)

#### Product Details

Purity:	Greater than 95 % as determined by SDS-PAGE
Sterility:	0.2 µm filtered

#### Target Details

Target:	CCM2
Alternative Name:	CCM2 ( <a href="#">CCM2 Products</a> )
Background:	C7orf22, Ccm2, CCM2 gene, CCM2_HUMAN, Cerebral cavernous malformation 2, Cerebral cavernous malformations 2 protein, Chromosome 7 open reading frame 22, Malcavernin, MGC4067, MGC4607, MGC74868, OSM, Osmosensing scaffold for MEKK3, OTTHUMP00000159554, OTTHUMP00000214270, OTTHUMP00000214271, OTTHUMP00000214273, PP10187

## Target Details

Molecular Weight: 31.6 kDa

Pathways: [Cell-Cell Junction Organization](#)

## Application Details

Application Notes: Optimal working dilution should be determined by the investigator.

Restrictions: For Research Use only

## Handling

Format: Lyophilized

Reconstitution: Centrifuge the vial at 10,000 rpm for 1 minute, reconstitute at 200 µg/mL in sterile distilled water by gentle pipetting 2-3 times, don't vortex

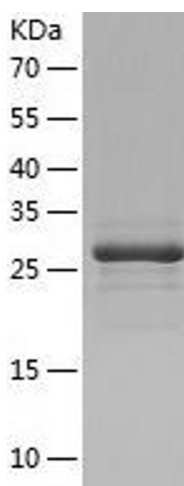
Buffer: Lyophilized from a 0.2 µm filtered solution in 10 mM Hepes, 500 mM NaCl with 5 % trehalose, pH 7.4

Storage: 4 °C, -20 °C

Storage Comment: -20°C for 12 months as lyophilized, 2-8°C for 1 month under sterile conditions after reconstitution

Expiry Date: 12 months

## Images



### Western Blotting

Image 1.