



[Go to Product page](#)

Datasheet for ABIN7122248

## CRCP Protein (AA 1-148) (His tag)

### 1 Image

#### Overview

Quantity:	50 µg
Target:	CRCP
Protein Characteristics:	AA 1-148
Origin:	Human
Source:	Escherichia coli (E. coli)
Protein Type:	Recombinant
Purification tag / Conjugate:	This CRCP protein is labelled with His tag.
Application:	ELISA, Western Blotting (WB)

#### Product Details

Purity:	Greater than 95 % as determined by SDS-PAGE
Sterility:	0.2 µm filtered

#### Target Details

Target:	CRCP
Alternative Name:	CRCP ( <a href="#">CRCP Products</a> )
Background:	Calcitonin gene related peptide receptor component, Calcitonin gene related peptide receptor component protein, Calcitonin gene-related peptide-receptor component protein, CGRP receptor component protein, CGRP-RCP, CGRP-receptor component protein, CGRPRCP, CRCP
Molecular Weight:	16.2 kDa

## Target Details

---

UniProt: [O75575](#)

## Application Details

---

Application Notes: Optimal working dilution should be determined by the investigator.

Restrictions: For Research Use only

## Handling

---

Format: Lyophilized

Reconstitution: Centrifuge the vial at 10,000 rpm for 1 minute, reconstitute at 200 µg/mL in sterile distilled water by gentle pipetting 2-3 times, don't vortex

Buffer: Lyophilized from a 0.2 µm filtered solution in 10 mM Hepes, 500 mM NaCl with 5 % trehalose, pH 7.4

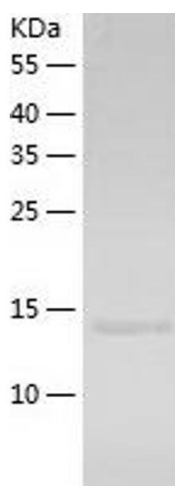
Storage: 4 °C, -20 °C

Storage Comment: -20°C for 12 months as lyophilized, 2-8°C for 1 month under sterile conditions after reconstitution

Expiry Date: 12 months

## Images

---



### Western Blotting

Image 1.