



[Go to Product page](#)

Datasheet for ABIN7122250

Galectin 10 Protein (AA 1-142) (His-IF2DI Tag)

1 Image

Overview

Quantity:	50 µg
Target:	Galectin 10 (CLC)
Protein Characteristics:	AA 1-142
Origin:	Human
Source:	Escherichia coli (E. coli)
Protein Type:	Recombinant
Purification tag / Conjugate:	This Galectin 10 protein is labelled with His-IF2DI Tag.
Application:	Western Blotting (WB), ELISA

Product Details

Purity:	Greater than 95 % as determined by SDS-PAGE
Sterility:	0.2 µm filtered

Target Details

Target:	Galectin 10 (CLC)
Alternative Name:	Galectin 10 (CLC Products)
Background:	BSF3, Charcot Leyden crystal protein, Charcot-Leyden crystal protein, CLC, EC 3.1.1.5, Eosinophil lysophospholipase, Gal-10, Galectin-10, LGALS10, LGALS10A, LPPL HUMAN, LPPL_HUMAN, Lysolecithin acylhydrolase, MGC149659
Molecular Weight:	37.1 kDa

Target Details

UniProt:	C5HZ13
Pathways:	Regulation of Leukocyte Mediated Immunity , Positive Regulation of Immune Effector Process , Production of Molecular Mediator of Immune Response

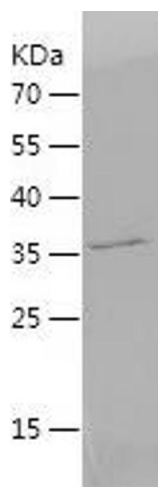
Application Details

Application Notes:	Optimal working dilution should be determined by the investigator.
Restrictions:	For Research Use only

Handling

Format:	Lyophilized
Reconstitution:	Centrifuge the vial at 10,000 rpm for 1 minute, reconstitute at 200 µg/mL in sterile distilled water by gentle pipetting 2-3 times, don't vortex
Buffer:	Lyophilized from a 0.2 µm filtered solution in 10 mM Hepes, 500 mM NaCl with 5 % trehalose, pH 7.4
Storage:	4 °C, -20 °C
Storage Comment:	-20°C for 12 months as lyophilized, 2-8°C for 1 month under sterile conditions after reconstitution
Expiry Date:	12 months

Images



Western Blotting

Image 1.