

Datasheet for ABIN7122253

CHMP2B Protein (AA 1-213) (His tag)[Go to Product page](#)**1** Image

Overview

Quantity:	50 µg
Target:	CHMP2B
Protein Characteristics:	AA 1-213
Origin:	Human
Source:	Escherichia coli (E. coli)
Protein Type:	Recombinant
Purification tag / Conjugate:	This CHMP2B protein is labelled with His tag.
Application:	ELISA, Western Blotting (WB)

Product Details

Purity:	Greater than 95 % as determined by SDS-PAGE
Sterility:	0.2 µm filtered

Target Details

Target:	CHMP2B
Alternative Name:	CHMP2B (CHMP2B Products)
Background:	ALS17, Charged multivesicular body protein 2b, CHM2B_HUMAN, CHMP family, member 2B, CHMP2.5, CHMP2b, Chromatin modifying protein 2b, Chromatin-modifying protein 2b, DMT1, hVps2-2, Vacuolar protein sorting 2, yeast, homolog of, B, Vacuolar protein sorting 2-2
Molecular Weight:	23.3 kDa

Target Details

UniProt: [Q9UQN3](#)

Application Details

Application Notes: Optimal working dilution should be determined by the investigator.

Restrictions: For Research Use only

Handling

Format: Lyophilized

Reconstitution: Centrifuge the vial at 10,000 rpm for 1 minute, reconstitute at 200 µg/mL in sterile distilled water by gentle pipetting 2-3 times, don't vortex

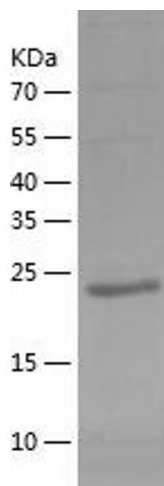
Buffer: Lyophilized from a 0.2 µm filtered solution in 10 mM Hepes, 500 mM NaCl with 5 % trehalose, pH 7.4

Storage: 4 °C, -20 °C

Storage Comment: -20°C for 12 months as lyophilized, 2-8°C for 1 month under sterile conditions after reconstitution

Expiry Date: 12 months

Images



Western Blotting

Image 1.