



[Go to Product page](#)

Datasheet for ABIN7122298

CCL3 Protein (AA 23-92) (His tag)

1 Image

Overview

Quantity:	50 µg
Target:	CCL3
Protein Characteristics:	AA 23-92
Origin:	Human
Source:	Escherichia coli (E. coli)
Protein Type:	Recombinant
Purification tag / Conjugate:	This CCL3 protein is labelled with His tag.
Application:	Western Blotting (WB), ELISA

Product Details

Purity:	Greater than 95 % as determined by SDS-PAGE
Sterility:	0.2 µm filtered

Target Details

Target:	CCL3
Alternative Name:	Macrophage Inflammatory1 alpha (CCL3 Products)
Background:	C C motif chemokine 3, CCL 3, CCL3, CCL3_HUMAN, Chemokine (C C motif) ligand 3, Chemokine C C motif ligand 3, Chemokine ligand 3, G0/G1 switch regulatory protein 19 1, G0/G1 switch regulatory protein 19-1, G0S19 1, G0S19 1 protein, Heparin binding chemotaxis protein, L2G25B, LD78 alpha
Molecular Weight:	7.6 kDa

Target Details

UniProt: [P10147](#)

Pathways: [Cellular Response to Molecule of Bacterial Origin, Autophagy](#)

Application Details

Application Notes: Optimal working dilution should be determined by the investigator.

Restrictions: For Research Use only

Handling

Format: Lyophilized

Reconstitution: Centrifuge the vial at 10,000 rpm for 1 minute, reconstitute at 200 µg/mL in sterile distilled water by gentle pipetting 2-3 times, don't vortex

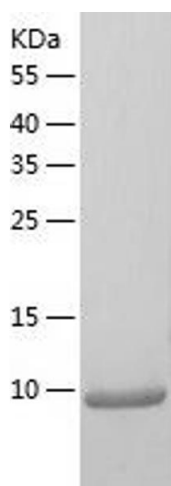
Buffer: Lyophilized from a 0.2 µm filtered solution in 10 mM Hepes, 500 mM NaCl with 5 % trehalose, pH 7.4

Storage: 4 °C, -20 °C

Storage Comment: -20°C for 12 months as lyophilized, 2-8°C for 1 month under sterile conditions after reconstitution

Expiry Date: 12 months

Images



Western Blotting

Image 1.