



[Go to Product page](#)

Datasheet for ABIN7122350

CLNS1A Protein (AA 1-237) (His tag)

1 Image

Overview

Quantity:	50 µg
Target:	CLNS1A
Protein Characteristics:	AA 1-237
Origin:	Human
Source:	Escherichia coli (E. coli)
Protein Type:	Recombinant
Purification tag / Conjugate:	This CLNS1A protein is labelled with His tag.
Application:	ELISA, Western Blotting (WB)

Product Details

Purity:	Greater than 95 % as determined by SDS-PAGE
Sterility:	0.2 µm filtered

Target Details

Target:	CLNS1A
Alternative Name:	CLNS1A (CLNS1A Products)
Background:	Chloride channel, Chloride channel nucleotide sensitive 1A, Chloride channel regulatory protein, Chloride conductance regulator, volume sensitive, Chloride conductance regulatory protein ICln, Chloride ion current inducer protein, ClCl, CLNS 1A, Clns1a, CLNS1B
Molecular Weight:	26 kDa

Target Details

UniProt: [P54105](#)

Pathways: [Ribonucleoprotein Complex Subunit Organization](#)

Application Details

Application Notes: Optimal working dilution should be determined by the investigator.

Restrictions: For Research Use only

Handling

Format: Lyophilized

Reconstitution: Centrifuge the vial at 10,000 rpm for 1 minute, reconstitute at 200 µg/mL in sterile distilled water by gentle pipetting 2-3 times, don't vortex

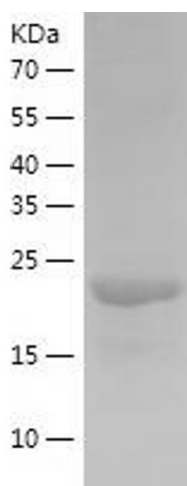
Buffer: Lyophilized from a 0.2 µm filtered solution in 10 mM Hepes, 500 mM NaCl with 5 % trehalose, pH 7.4

Storage: 4 °C, -20 °C

Storage Comment: -20°C for 12 months as lyophilized, 2-8°C for 1 month under sterile conditions after reconstitution

Expiry Date: 12 months

Images



Western Blotting

Image 1.